



ART EXHIBITS

The Arboretum sponsors art exhibitions throughout the year, including an annual competition and outdoor environmental art. Call 410-634-2847, ext. 0 or e-mail info@adkinsarboretum.org for gallery hours.

Second Sitings, an outdoor show of environmental sculptures by Centreville artists Howard and Mary McCoy, remains on view through September 15. Each of these eight site-specific works was inspired by the Arboretum's forest and created exclusively with vines and fallen branches the artists gathered there.

The power of nature is unmistakable in Kit-Keung Kan's exhibit, *Water, Water and Water*, on view in the Visitor's Center through September 30. A retired physicist who lives in Bethesda, Kan captures breathtaking scenes of rushing water in his large Chinese ink and watercolor paintings on rice paper. Although best known for his distinctive painting style mingling modernism with classical Chinese landscape painting, Kan is familiar to many Arboretum visitors for his scrolls of calligraphy hung in the forest in the winter of 2009–10.



"Falling Water XLII," Kit-Keung Kan, Chinese ink and watercolor on rice paper, 35 1/2" x 37 1/2"

"Great Wassy," Regina Tumasella, acrylic on board, 11" x 14"



Baltimore artist Regina Tumasella's paintings brim with swaths of brilliant color half-veiling undercurrents of more subtle shades. On view in the Visitor's Center October 3 through November 25, her paintings are almost wholly abstract, yet they clearly evoke landscapes. A close observer of the natural world since her early years in the Catskill Mountains, Tumasella links landscapes and her emotional response to them in shimmering impressions of specific places. There will be a reception on Saturday, October 29 from 3 to 5 p.m.

Takoma Park artist Marilyn Banner's luminous and highly tactile encaustic paintings will be on view at the Visitor's Center November 28 through January 27, 2012. Focusing on the myriad colors and textures found in marshes and taking full advantage of the range of drawing and painting techniques possible in this hot wax process, she creates bold, richly layered scenes with a surprisingly broad range of character and atmosphere. There will be a reception on Saturday, December 10 from 3 to 5 p.m.



"Blackfish Creek," Marilyn Banner, encaustic on wood, 14" x 14"



Animals of the Arboretum

Migration Bird Walk

SATURDAY MORNINGS, SEPTEMBER 3 AND 10, 7:30-9 A.M.
FREE WITH ADMISSION

Join avid birders Karen Harris and Danny Poet, each with more than 25 years of birding experience and members of the Talbot County and Caroline County bird clubs, on a guided walk of the Arboretum. Scout out the fall warblers; Chestnut-sided, Tennessee, and Blue Wing on their way to South and Central America. Registration required. Limit: 20

Herpetology Walk— Amphibians and Reptiles

SUNDAY, OCTOBER 2, 1-2:30 P.M.
FREE WITH ADMISSION

Join Scott Smith to learn about the frogs, turtles, snakes, and salamanders that inhabit the Arboretum wetlands and forest. Scott is the Maryland DNR—Natural Heritage Program Wildlife Diversity Ecologist and Amphibian and Reptile Atlas project coordinator for Talbot and Caroline counties. Learn more about amphibians and reptiles at www.dnr.state.md.us/wildlife/Plants_Wildlife/herps/index.asp. Registration required. Limit: 20

Mammals of the Arboretum Walk

FRIDAY, OCTOBER 21, 10-11:30 A.M.
FREE WITH ADMISSION

Join Pete Jayne on a wildlife-oriented walk along the Arboretum paths with a focus on the region’s mammals. While it is typically difficult to see mammals during daylight hours, they often leave signs of their presence that help in identifying what species was there and perhaps what it was up to. Pete is the Maryland DNR, Wildlife and Heritage Service, Associate Director for Game Management. Registration required. Limit: 20

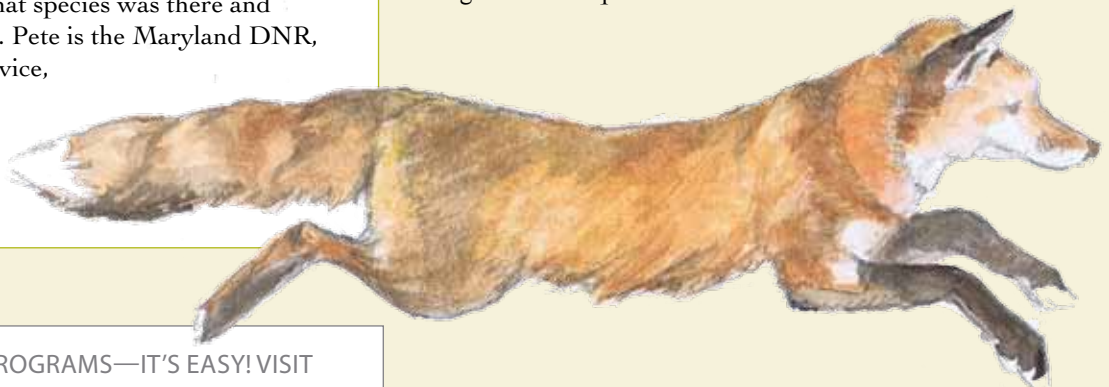


Eating Seasonally

WEDNESDAY, SEPTEMBER 14, 1-2:30 P.M.
FEE: \$15 MEMBERS, \$20 GENERAL PUBLIC

Learning to eat in rhythm with the seasons will also attune you to your body’s special needs. Root vegetables are grounding and are perfect for times when we are moving indoors during winter, while greens abundant in spring are cleansing and appropriate for reemergence. Explore where to shop, what to buy, the distinctions between confusing terms like natural and organic, and ideas for simple ways to preserve summer’s harvests. Each participant will come away with enthusiasm for becoming a dedicated “locavore!”

Elizabeth Beggins is a freelance writer and educator with over a decade of experience as a market gardener on the Eastern Shore. She believes that health depends on a keen understanding of what we eat and that our choices as consumers are vital to sustaining ourselves and our planet. She also manages The You Food Project, a grassroots initiative designed to connect youth to food and the environment through school gardens. For more information, contact her at youfoodproject@gmail.com or call (410)745-3457. Registration required. Limit: 35



REGISTER ONLINE FOR PROGRAMS—IT’S EASY! VISIT
WWW.ADKINSARBORETUM.ORG.

Registration is required for all programs. Register online at www.adkinsarboretum.org, call 410-634-2847, extension 0, or e-mail info@adkinsarboretum.org.

Gardening in the Woods

THURSDAYS, SEPTEMBER 29 AND OCTOBER 6 AND 13, 1–3 P.M.
FEE: \$15 MEMBERS EACH PROGRAM OR \$35 FOR ALL THREE,
\$20 GENERAL PUBLIC EACH PROGRAM OR \$45 FOR ALL THREE

Join ecologist Dr. Sylvan Kaufman for this three-part series on woodland gardens. Learning about the ecology of forests provides deeper understanding of gardens that mimic the structure and function of the forest. This series is also suitable for homeowners on wooded lots who want to learn more about their forest.

Forest Ecology for Gardeners

THURSDAY, SEPTEMBER 29

Whether you have a well-established woodland garden or want to start one, understanding the basics of forest ecology will help you understand your garden. This class will look at types of natural forests in Maryland and how forests change over time. Learn the roles that plants, animals, fungi, and bacteria play in the forest ecosystem. Recognize the factors that threaten forest health and how you can maintain a healthy forest or woodland garden. Registration required. Limit: 35

Describe Your Forest

THURSDAY, OCTOBER 6

Learn the secrets of your forest. From how it has been used in the past to what species you might expect to find, looking carefully at a forest can tell a lot about its future. This hands-on outdoor class will examine several forested areas around Adkins Arboretum; assess the forest community type; look for past and present disturbances; and look at overall forest health. Participants can then apply these techniques to their own land to help decide what to plant and how to manage their woodland garden or forest. In case of inclement weather, an indoor class exercise will be substituted. Registration required. Limit: 35

Woodland Native Plants

THURSDAY, OCTOBER 13

From groundcovers to spring flowers to summer whites and fall color, there are many delightful native plants for the woodland garden. This talk will focus on coastal plain woodland species but will include some easy-to-grow Piedmont woodland plants as well. Participants will come away with a great list of native plants suitable for woodland gardens. Registration required. Limit: 35



Adventures in Plant Propagation

WEDNESDAY, OCTOBER 5, 10 A.M.–NOON

FEE: \$15 MEMBERS, \$20 GENERAL PUBLIC

All gardeners have plants we'd like a few more of—or lust after that special something in a friend's garden. Join Barbara W. Ellis to learn a variety of plant propagation techniques that make sharing plants easy. Participants will learn easy techniques for starting seed indoors, as well as a practical and low-work method for starting seed of perennials and woody plants outdoors. The workshop will also cover seed collection and labeling. In addition, participants will learn foolproof techniques for taking and rooting cuttings—from easy plants like tender coleus, to harder-to-root subjects such as shrubs. The workshop will also cover techniques for division, rooting suckers, layering techniques, and handling transplants. Registration required. Limit: 20

(Adult Programs continued on page 4)



Photos courtesy of Mike Hardesty, Washington College



A Tree Grows Quickly in the Forest: Climate Change and Accelerated Tree Growth

WEDNESDAY, NOVEMBER 2, 1-2:30 P.M.

FEE: \$15 MEMBERS, \$20 GENERAL PUBLIC

There is evidence that trees in the Eastern United States are growing faster than they have in the past 225 years. Small changes in their growth rate can have significant effects on weather patterns, biodiversity, and climate change. Geoffrey Parker, senior scientist with the Smithsonian Environmental Research Center, has tracked the growth of 55 stands of mixed hardwood forest plots in Maryland for more than 20 years. Dr. Parker will discuss this research, why it might be happening, and the possible ramifications of increased forest growth. Registration required. Limit: 35

Autumn Color in the Forest

FRIDAY, NOVEMBER 4, 1-3 P.M.

FEE: \$15 MEMBERS, \$20 GENERAL PUBLIC

Have you ever wondered about the brilliant reds and golden yellows that show up in the woods in late October and early November? You may have noticed that both leaves and berries turn many shades of color. Learn how this happens and why these colors may have evolved, and explore the marvels of leaf and fruit color chemistry with docent naturalist and nutrition scientist Dr. Julianna Pax. This afternoon talk will include an indoor presentation and an outdoor walk in the woods to identify colorful autumn players. Many of these eye-catching shrub and tree species can be planted in your own landscape. Registration required. Limit: 35



Foraging

SUNDAY, OCTOBER 23, 1-2:30 P.M.

FEE: \$15 MEMBERS, \$20 GENERAL PUBLIC

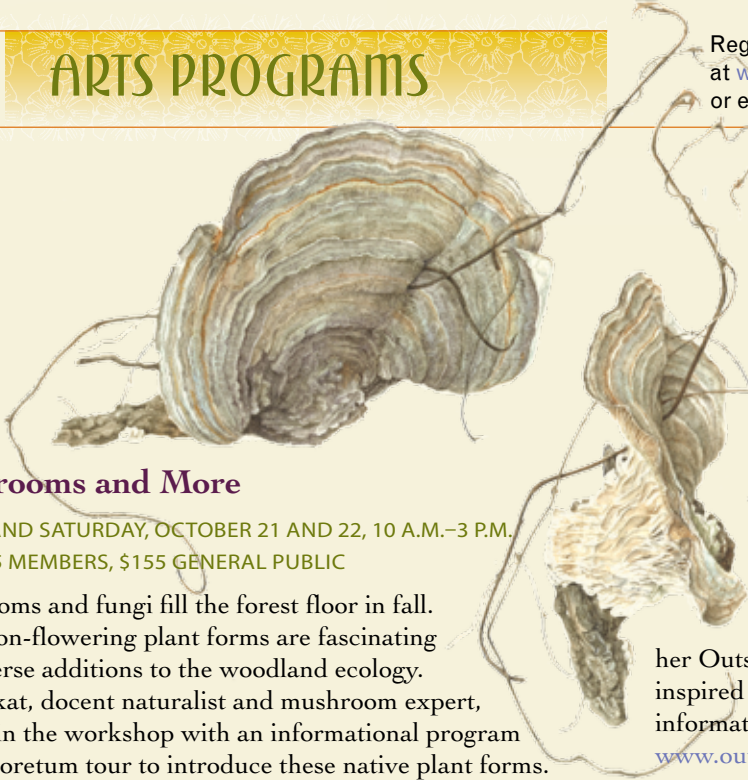
This hands-on workshop will immerse participants in the exciting, sustainable, and nutritious world of foraging for wild plants. Participants will be taken into the field to learn how to identify, harvest, and prepare many of fall's wild edibles. It doesn't get more local or organic than this!

Bill Schindler, Ph.D. is a professor of anthropology and archaeology at Washington College. His research focuses on prehistoric foodways and technologies. Dr. Schindler incorporates wild foods into his and his family's diet on a regular basis. Please note that foraging by individuals is not permitted on the Arboretum grounds. Registration required. Limit: 25





Registration is required for all programs. Register online at www.adkinsarboretum.org, call 410-634-2847, extension 0, or e-mail info@adkinsarboretum.org.



Mushrooms and More

FRIDAY AND SATURDAY, OCTOBER 21 AND 22, 10 A.M.–3 P.M.
FEE: \$125 MEMBERS, \$155 GENERAL PUBLIC

Mushrooms and fungi fill the forest floor in fall. These non-flowering plant forms are fascinating and diverse additions to the woodland ecology. Bill Trakat, docent naturalist and mushroom expert, will begin the workshop with an informational program and Arboretum tour to introduce these native plant forms. The remainder of the class will be devoted to documenting individual specimens in watercolor. Some watercolor experience is recommended; a materials list will be provided. Bring a sack lunch. Registration required. Limit: 10.

Macro and Close-up Photography

SATURDAY, OCTOBER 29, 8 A.M.–NOON
FEE: \$35 MEMBERS, \$45 GENERAL PUBLIC

Discover and photograph close-ups of fall colors, textures, and patterns. Learn and apply close-up techniques for creating striking images while shooting with instructor Josh Taylor. The workshop will focus on composition, close-up techniques, and lighting. The workshop includes a classroom session, an illustrated handout, and shooting sessions with the instructor. Participants will be able to e-mail the instructor two JPEG images from the workshop for written critique. The workshop will also introduce and cover some Photoshop/Photoshop Elements techniques for image enhancement, such as focus stacking, exposure blending, etc.

Instructor Joshua Taylor Jr. has presented photography workshops at the Smithsonian National Orchid Show, the U.S. National Arboretum, the U.S. Botanic Garden, as well as for public gardens, preserves, and horticultural societies across the region. In addition to teaching in the Smithsonian Studio Arts Program and at the Corcoran School of Art and Design, he exhibits his work regularly and speaks at camera and garden clubs. Registration required. Limit: 10

Note: Bring ALL photo equipment, including a digital memory card, extra batteries, and camera manual. A tripod is optional but is highly recommended. While point-and-shoot cameras are welcome, please be reminded that these cameras have limited options but can work quite well for close-ups.

Plein Air Painting at the Arboretum

SATURDAY, NOVEMBER 5, 1–3:30 P.M.
FEE: \$25 MEMBERS, \$30 GENERAL PUBLIC

Learn how to capture the beauty of nature's changing fall colors on canvas under the guidance of a local art educator and artist. Participants will learn about composition, color, basic acrylic painting techniques, and the joy of "plein air" painting while composing their own original rendition of the Arboretum in its fall splendor.

Dawn Malosh is a local artist, art educator, and recent transplant to the Eastern Shore. She currently serves as a teaching artist through

her Outside Art programs and creates a variety of nature-inspired artworks in her Sherwood, MD, art studio. For more information on Dawn and her Outside Art programs, visit www.outsideartlessons.com. Registration required. Limit: 12

Sumi-e Painting

SATURDAY, NOVEMBER 19, 1–3 P.M.
FEE: \$20 MEMBERS, \$25 GENERAL PUBLIC

Learn how to meditate and relax while painting the "chi" of nature, as Buddhist monks called the Chan did a thousand years ago. This class will teach the traditional meditative eastern approach and style to nature and nature painting. Participants will learn about traditional eastern painting media, such as the bamboo brush, sumi-e ink, rice paper, and suzuri inkwell. There will be plentiful opportunities to connect to the spirit of nature while creating beautiful monochromatic nature scenes and landscapes inspired by nature. This is a very simple approach to painting, and all artistic levels are welcome. Registration required. Limit: 12

Basketry: Free-form Basket

THURSDAY, DECEMBER 8, 10 A.M.–4 P.M.
FEE: \$45 MEMBERS, \$55 GENERAL PUBLIC

Bring a lunch, basin or small tub, clippers, awl, and jackknife, and join the fun. Make a free-form rimmed basket with wild jasmine vine and natural and dyed rattan using traditional melon basket technique. This functional, colorful, one-of-a-kind basket can be used as a serving piece or as art sculpture. Instructor Lee Zimmerman Nelson has exhibited her award-winning basketry for more than 30 years, nationally and abroad, and teaches regularly at Arrowmont (Tennessee) and the John C. Campbell Folk School (North Carolina), as well as in Maryland and Virginia. She integrates her knowledge of the craft and love of teaching in a relaxed and informative manner. Materials will be provided. Bring a sack lunch. Registration required. Limit: 12



Nature as Muse

FIRST WEDNESDAYS, SEPTEMBER 7, OCTOBER 5, NOVEMBER 2, DECEMBER 7, 10 A.M.–NOON
FREE WITH ADMISSION

Each month this writing group will follow a different winding path through the Arboretum to quietly observe nature in detail. This will provide inspiration for expressing ideas that begin as seeds in our minds and then blossom into discovery as we write. No previous writing experience necessary. Enjoy how the paths in the Arboretum and the paths in your mind can lead you on an unpredictable but delightful journey. Dress for both indoor and outdoor forest adventure. Registration required. Limit: 12

Exploring Nature and Five Movements of Life through Writing, Reflection, and Community

MONDAY, SEPTEMBER 26, 1-3:30 P.M.
FEE: \$25 MEMBERS, \$30 GENERAL PUBLIC

Many cultures look to nature as teacher, and we too might use nature's lessons to encourage our own growth and connectedness to life around us. By exploring five elements honored in traditional Chinese wisdom, we can be part of the graceful flow of seasons. Celebrate late summer as part of nature's cycle of seasons—a time to reflect on the joys of summer's passing and renew our appreciation for the abundance of earth and its fullness.

We'll listen to poetry, try a few gentle writing exercises, spend some time outdoors, and engage in simple collage activities. No previous experience in these areas is necessary! The Arboretum provides a perfect location to immerse ourselves in nature and discover how it speaks in our own lives. Instructor Katherine Johnson is a life coach and teacher of creative practices as SoulCollage®, writing, meditation, and personal growth. She holds a doctorate from the University of Maryland and teaches for Tai Sophia Institute and Johns Hopkins University, as well as several holistic learning centers. Katherine's life journey has integrated practices of traditional professional development with a rich blend of holistic learning. Registration required. Limit: 12

Chanticleer Garden Bus Trip

THURSDAY, SEPTEMBER 22, 8 A.M.–5:30 P.M.
FEE: \$95 MEMBERS, \$120 GENERAL PUBLIC

Truly one of the world's most creative gardens, Chanticleer is located just outside Philadelphia in Wayne, Pennsylvania. A visit in early spring included an onion snow—the last snow of the season—early bulb blooms, and unfurling of new growth. Now participants will visit to see the garden with a full summer's worth of growth and flowers and seed. Originally the estate was known for its majestic trees and verdant lawns. Today the trees and lawns remain, but the focus is on plant combinations, containers, textures, and colors, often relying on foliage more than flowers. A vegetable garden complements a cut-flower garden. Courtyards are a framework for unusual combinations of hardy and tropical plants. Vines grow in nooks and crannies, trailing and twining. A serpentine of cedars, boulders, and agronomic crops undulates through a mown hillside. A woodland garden full of rarities leads to a water garden surrounded by exuberant perennials. Sculptural, homemade seats, benches, wrought iron fences, and bridges highlight the uniqueness and personal nature of the garden. For more information about Chanticleer Garden, visit www.chanticleergarden.org. After touring the gardens in the morning, participants will have lunch at Terrain, the hip Garden Center and Café by the founder of Anthropologie. For more information about Terrain, visit www.shopterrain.com.

Fee includes bus transportation, admission, garden guided tour, and a buffet lunch at Terrain Garden Center and Cafe. Registration required. Limit: 35



Cyburn Arboretum

REGISTER ONLINE FOR PROGRAMS—IT'S EASY! VISIT WWW.ADKINSARBORETUM.ORG.



Cylburn Arboretum and Howard Peters Rawlings Conservatory

WEDNESDAY, OCTOBER 26, 8 A.M.–5 P.M.
FEE: \$85 MEMBERS, \$105 GENERAL PUBLIC

Cylburn Arboretum is a 200-acre public garden and nature preserve located in Baltimore City. Wander through three miles of spectacular trails that wind through a mature piedmont forest. Enjoy award-winning gardens, including roses, daylilies, dahlias, and annuals. Following the walk, a lunch of soup and salad prepared by Atwater's will be served in the Cylburn mansion. The soup and salad will reflect the season and walk. Cylburn mansion is a Renaissance Revival-style home designed in the 1860s by George Frederick, the architect of City Hall. Constructed of gneiss from the local Bare Hills quarry, the mansion is surrounded by 15 strikingly impressive tree and shrub collections. Participants will also visit the new LEED-certified Vollmer Visitor Center. For more information about Cylburn Arboretum, visit www.cylburnassociation.org.

After lunch, the group will travel to Druid Hill Park in Baltimore for a guided tour of the Howard Peters Rawlings Conservatory, described by Frederick Rasmussen of the *Baltimore Sun* as "that wonderful whimsical-looking building from the age of Queen Victoria...a brilliant symphony of curved glass and light." The Conservatory features year-round displays of plant material in five distinct areas of the facility: the 1888 Palm House, the Orchid Room, Mediterranean House, Tropical House, and Desert House. For more information about the Conservatory, visit www.baltimoreconservatory.org.

Fee includes bus transportation, Soup n' Walk lunch by Atwater's at Cylburn Arboretum, and guided tour of the Howard Peters Rawlings Conservatory in Druid Hill Park. Registration required. Limit: 35



First Saturday Guided Walks

FIRST SATURDAYS, SEPTEMBER 3, OCTOBER 1, NOVEMBER 5,
DECEMBER 3, 10 A.M.

FREE WITH ADMISSION

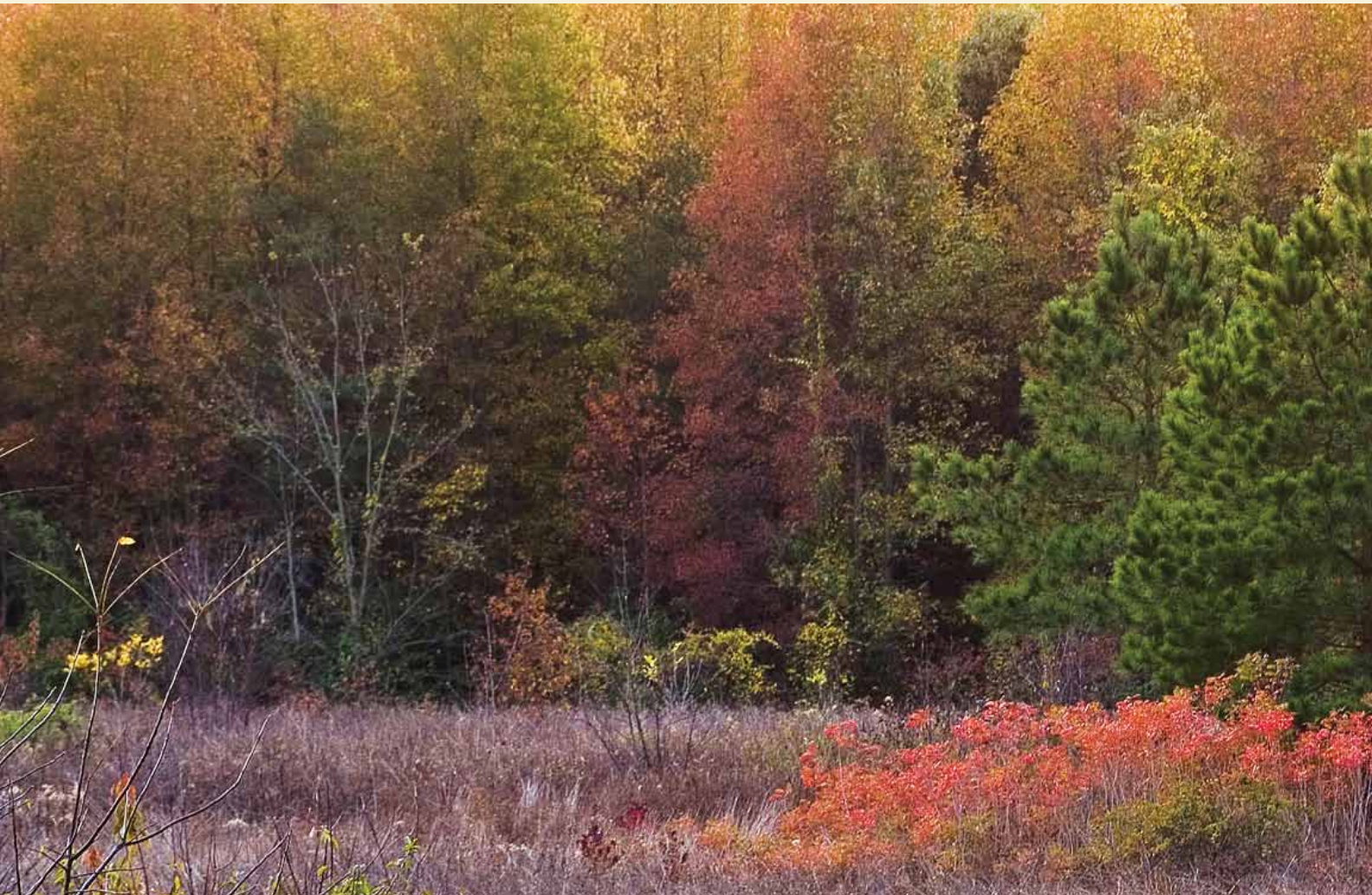
Explore the Arboretum's diverse plant communities on a guided walk led by an Arboretum docent naturalist. Explore the bottomland forest and upland paths, meander through majestic beech trees, traverse the native meadows, and follow the narrow Tuckahoe Creekside path to glimpse creek waters and wildflowers. Guided walks are free for members and free with admission for the general public. Tours begin at the Visitor's Center and last approximately one hour.

To schedule a guided walk for more than 10 participants, contact Adult Program Coordinator Ginna Tiernan at gtiernan@adkinsarboretum.org or 410-634-2847, ext. 27.

Second Saturday Guided Walks

SATURDAYS, SEPTEMBER 10 AND OCTOBER 8, 1–2:30 P.M.
FREE WITH ADMISSION

Come on a unique journey toward understanding native plants and how they can become a greater part of your home gardening experience. Horticulturalist Eric Wittman will lead visitors on a walk about the Arboretum for gardeners to identify ornamental native plants for gardening. Wittman's green background started in the golf course industry through his installation of high-profile, deer-resistant plantings for several prominent courses on Maryland's Eastern Shore. He served as director of horticulture for a highly regarded arboriculture firm in the Washington, DC, area before becoming co-owner of Terra Firma Plantcare, where he is responsible for ornamental IPM, invasive plant management, and specialty maintenance programs. He has spoken about native plants to Arboretum docents, Master Gardeners, national garden clubs, and government agencies.



Fall Soup 'n Walks

Nature, Nurture, and Nutrition

SATURDAYS, SEPTEMBER 10, OCTOBER 15, AND NOVEMBER 12
11 A.M.–1:30 P.M.

FEE: \$20 MEMBERS, \$25 GENERAL PUBLIC

Track the changing landscape from summer to fall. Following a guided walk with a docent naturalist, enjoy a delicious and nutritious lunch along with a brief lesson about the meal's nutritional value. Copies of recipes are provided.

October 15

Check out the Meadow for Later Grasses and Some Mushrooms/Watch for Early Fall Color Along the Edges of the Meadow

Indian grass, big bluestem, little bluestem, goldenrod, milkweed pods, mushrooms, red and orange sweet gum, sassafras, sumac, tupelo, and dogwood leaves. Registration required. Limit: 25

MENU

Spicy black bean and potato stew

Pear, orange, and pine nut salad

Best bran muffins

Apple pie with crumb topping

September 10

See the Sunny Meadows with the Golden Brown Grasses and Many Yellow and Purple Flowers

Milkweed, black-eyed Susan, goldenrod, Maryland golden aster, purple love grass, pearly everlasting, Indian grass, big bluestem. Registration required. Limit: 25

MENU

Sweet potato leek soup

Quinoa, green bean, and tomato salad

Wheat bread with seeds and hummus spread

Oat berry scones

November 12

Search for the Yellow Fall Colors that Dazzle our Eyes and Nuts and Berries to Feed the Wildlife

Dogwood, holly, sumac, hearts-a-bursting, devil's walking stick, and jack-in-the-pulpit berries; hickory and beech nuts and oak acorns; yellow tulip tree, paw paw, and hickory leaves. Registration required. Limit: 25

MENU

Roast turkey vegetable soup

Apple date salad

Rye walnut bread with orange ricotta

Chocolate snack bars with cocoa sauce



Fall Native Plant Sale

Members-only Sale

FRIDAY, SEPTEMBER 16, 10 A.M.–6 P.M.

Shop the Members-only Sale for the best selection. New members are welcome! Members receive a 10% discount on plants; members at the Contributor (\$100) level and above receive a 20% discount. Members may place presale orders at www.adkinsplants.com through August 28.

Public Sale Days

SATURDAY AND SUNDAY, SEPTEMBER 17 AND 18
10 A.M.–4 P.M.

Enjoy fall in the garden! Take advantage of autumn’s cool, moist weather to add color and wildlife habitat to your landscape. The region’s largest selection of native perennials, grasses, shrubs, and trees will be for sale. Master Gardeners will be available to answer questions, and Arboretum docents will be on hand to lead guided walks. Members, including those who join on the sale day, receive a 10% discount on plants, gift shop items, and new books. Members who join at the Contributor level and above receive a 20% discount on plants. Sale days are popular and can be crowded, so please leave dogs at home. The sale benefits the Arboretum’s education programs and introduces the public to the beauty and benefit of gardening with native plants.

Used Book Sale

The Arboretum is accepting donations of gardening and nature-themed books and magazines for a book sale during the plant sale. Donations may be dropped off at the Arboretum any day of the week between 10 a.m. and 4 p.m. Shop for books and magazines at great prices on the sale days!

Tails and Trails Dog Walk
at Adkins Arboretum

Tails and Trails Dog Walk
SATURDAY, OCTOBER 1, 10 A.M.–2 P.M.

Celebrate dog ownership and help raise money for homeless animals at the third annual Tails and Trails event! The day features local vendors; refreshments; search and rescue and agility/rally course demonstrations; and sponsored dog walks. Proceeds benefit the animals served by the Caroline County Humane Society (CCHS). For more information, call 410-820-1600, e-mail kiwini1@yahoo.com, or visit www.carolinehumane.org.



A Celebration of Winter — Saturday, December 3

Ring in the holiday season with a full day of cheer at Adkins Arboretum.

Holiday Wreath Sale begins at 10 a.m.

OPEN FREE TO THE GENERAL PUBLIC

The annual Holiday Wreath Sale will offer the Arboretum's signature hand-crafted wreaths, and decorated topiaries and swags. A selection of roping and assorted cut greenery will also be available.

'Tis the Season Holiday Evening

6–9 P.M.

FEE:	MEMBER	GENERAL PUBLIC
	\$45 ADULT	\$60 ADULT
	\$75 COUPLE	\$100 COUPLE
	\$100 FAMILY	\$125 FAMILY
	\$15 CHILD	\$15 CHILD

(additional fee for horse and wagon rides)

Enjoy a celebration of lights, music, and sweet and savory fare. Guests will take guided walks to sing carols along luminaria-lit woodland paths, stopping to sip hot cider by a roaring bonfire. The Delmarva Stargazers will uncover the mysteries of the winter sky, and horse-drawn wagon rides around the Arboretum's meadows will take you back in time. These traditional holiday festivities promise a magical and memorable evening.

To register for the evening event, visit www.adkinsarboretum.org, or call 410-634-2847, ext. 0.

Creating a Holiday Wildlife Tree

10–11:30 A.M.

FEE:	MEMBER	GENERAL PUBLIC
	\$12 ADULT	\$15 ADULT
	\$20 FAMILY	\$25 FAMILY

This program will be held at the Arboretum Nursery.

Join Children's Program Coordinator Jenny Houghton in making natural ornaments designed to welcome wildlife. Raisin icicles, birdseed baskets, cranberry wreaths, suet pinecones, and more will make your outdoor tree festive and inviting to hungry creatures. All materials are provided; participants will create a variety of ornaments to take home. The workshop will close with hot chocolate and a holiday reading. Registration required. Limit: 20



Holiday Decorating Workshop

10 A.M.–NOON

FEE: \$35 MEMBERS, \$45 GENERAL PUBLIC

Create beautiful natural decorations for the holidays at this workshop led by Nancy Beatty, Arboretum docent and garden designer. Participants will make an elegant table centerpiece from fresh greens of cedar, pine, boxwood, and other natural materials and create an indoor wreath of dried static and nature's ornaments. Nancy will also demonstrate how to dress up your window boxes for creative outdoor displays. All supplies will be provided, but if you have a special container in mind for the table centerpiece, please bring it. Bring a sturdy box or basket to carry home your creations. Registration required. Limit: 10.

Swags

1–4 P.M.

FEE: \$35 MEMBERS, \$45 GENERAL PUBLIC

This program will be held in the Greenhouse at the Nursery complex.

Create your own Adkins Arboretum signature swag, just like those that decorate the Arboretum's entrance bridge each winter. Queen Anne's County Master Gardener Kathy Carmean and Arboretum volunteers will guide you through the construction and design process. All necessary natural greens, materials, and tools will be provided, but feel free to bring any additional ornamentation that you may like to include on your own creation. Registration required. Limit: 15.



Preschool Programs

Classes are open to children ages 3 to 5. Enrollment is limited to 15 children, so early registration is recommended. The fee for a session of eight classes is \$60 for members and \$75 for the general public. Each class includes a snack and a craft. Programs are led by popular children’s teacher Jenny Houghton. Register online at www.adkinsarboretum.org, call 410-634-2847, ext. 0, or e-mail info@adkinsarboretum.org. Registration required.

Session 1: Tuesdays, 10–11:15 a.m.

Session 2: Thursdays, 10–11:15 a.m.

Harvest Days

SEPTEMBER 20 AND 22

Welcome the start of fall with a last trip to the Funshine Garden. We’ll pick cranberries, store seeds for next spring, and look for signs of critters holing up to wait out the cold days ahead. After a picnic snack, we’ll return to the classroom to make a harvest craft.

Cattails for Breakfast, Cattails for Lunch

SEPTEMBER 27 AND 29

Did you know that the mashed root of the cattail plant can be used as toothpaste? Or that young cattail flowerheads can be boiled and eaten like corn on the cob? We’ll search for the amazing cattail in the Arboretum’s wetland, float cattail boats, and even share a cattail snack.



Seeds on the Move

OCTOBER 4 AND 6

It’s true: seeds move! Find out how and why as we make wishes on feathery milkweed seeds, float gumballs down the Blockston Branch, hunt for amazing popping jewelweed seeds, and play a game with hickory nuts.

The Towering Tulip Poplar

OCTOBER 11 AND 13

Just why is the tulip poplar the Arboretum’s tree of the year? We’ll find out as we search for golden tulip poplar leaves among drifts of fall foliage, make tulip poplar cats, and gather tulip poplar seeds on our nature walk.

Colorfest!

OCTOBER 18 AND 20

Come celebrate the beauty of fall at Adkins Arboretum as we gather fall leaves on a forest walk and enjoy a picnic snack under the trees. Then it’s back to the classroom to make leaf crafts and learn more about why leaves change color.

Pumpkin Party

OCTOBER 25 AND 27

It’s pumpkin season! Meet the magnificent pumpkin plant, snack on pumpkin bars, and make pumpkin shakers. Then wiggle and twist to the Pumpkin Polka!





Honk! Honk! Make Way for Geese

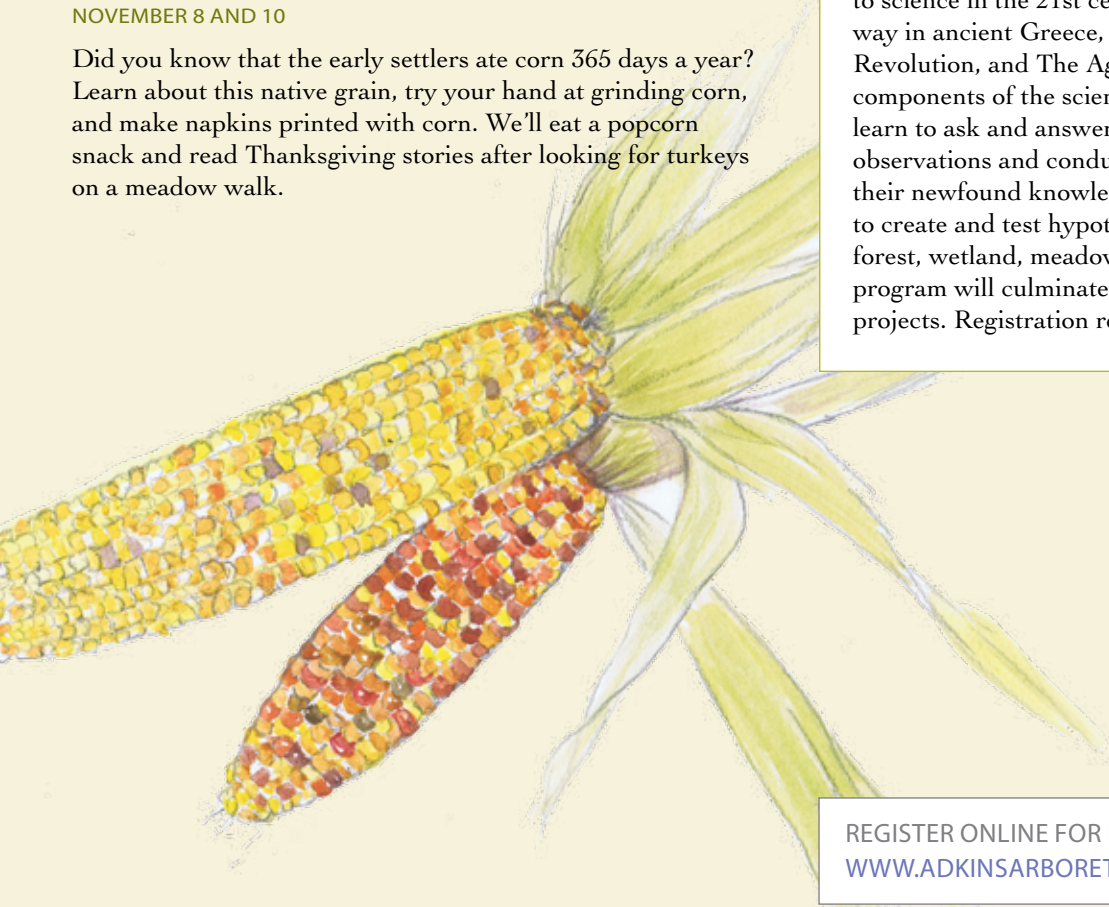
NOVEMBER 1 AND 3

It's that time of year again: the geese are heading south. We'll uncover the migratory habits of these feathered friends and look for birds of all types on an Arboretum nature walk. We'll also make a goose craft and enjoy goose-related books with our snack.

A-maize-ing Grain

NOVEMBER 8 AND 10

Did you know that the early settlers ate corn 365 days a year? Learn about this native grain, try your hand at grinding corn, and make napkins printed with corn. We'll eat a popcorn snack and read Thanksgiving stories after looking for turkeys on a meadow walk.



Science for Home School Students

THURSDAYS, OCTOBER 20–DECEMBER 1 (NO CLASS ON NOVEMBER 24), 1–2:30 P.M.

FEE: \$55 MEMBERS, \$70 GENERAL PUBLIC

PROGRAM IS DESIGNED FOR STUDENTS 7 TO 14 YEARS OF AGE

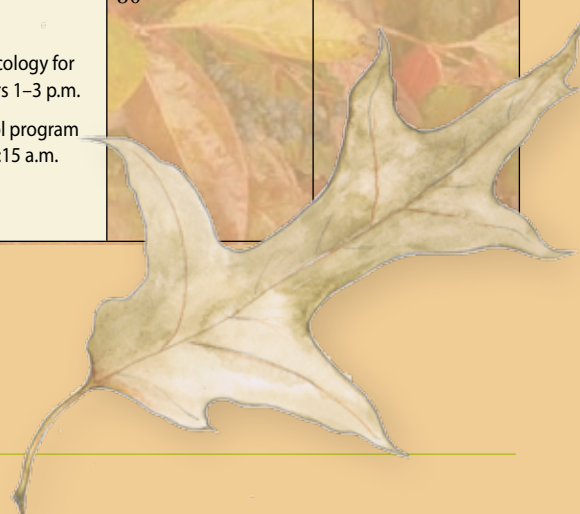
Uncover the fascinating origins of modern science with a glimpse into the past. Home school students will journey from the birth of science in ancient Mesopotamia to science in the 21st century, with stops along the way in ancient Greece, the Middle Ages, the Scientific Revolution, and The Age of Reason. Delving into the components of the scientific method, students will learn to ask and answer scientific questions by making observations and conducting research. Students will use their newfound knowledge in the field, working in teams to create and test hypotheses related to the Arboretum's forest, wetland, meadow, and stream habitats. The program will culminate in a science fair showcasing team projects. Registration required. Limit: 15.

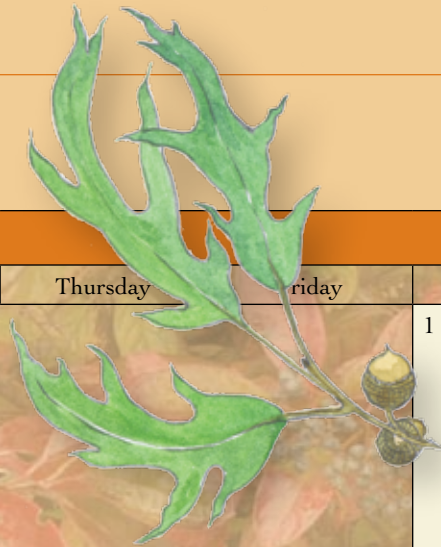
REGISTER ONLINE FOR PROGRAMS—IT'S EASY! VISIT
WWW.ADKINSARBORETUM.ORG.



SEPTEMBER

Sunday	Monday	Tuesday	Wednesday	Thursday	Friday	Saturday
				1 Kit-Keung Kan exhibit on view through September 30	2	3 Migration Bird Walk 7:30–9 a.m. Guided Walk 10 a.m.
4	5	6	7 Nature as Muse 10 a.m.–noon	8	9	10 Migration Bird Walk 7:30–9 a.m. Soup 'n Walk 11 a.m.–1:30 p.m. Second Saturday walk 1–2:30 p.m.
11	12	13	14 Eating Seasonally 1–2:30 p.m.	15	16 Members-Only Plant Sale 10 a.m.–6 p.m.	17 Fall Native Plant Sale 10 a.m.–4 p.m.
18 Fall Native Plant Sale 10 a.m.–4 p.m.	19	20 Preschool program 10–11:15 a.m.	21	22 Chanticleer bus trip 8 a.m. – 5:30 p.m. Preschool program 10–11:15 a.m.	23	24 Magic in the Meadow 6–9:30 p.m.
25	26 Exploring Nature and Five Movements 1–3:30 p.m.	27 Preschool program 10–11:15 a.m.	28	29 Forest Ecology for Gardeners 1–3 p.m. Preschool program 10–11:15 a.m.	30	





OCTOBER

Sunday	Monday	Tuesday	Wednesday	Thursday	Friday	Saturday
						1 Guided Walk 10 a.m. Tails and Trails Dog Walk 10 a.m.-2 p.m.
2 Herpetology Walk 1-2:30 p.m.	3 Regina Tumasella exhibit opens	4 Preschool program 10-11:15 a.m.	5 Adventures in Plant Propagation 10 a.m.-noon Nature as Muse 10 a.m.-noon	6 Preschool program 10-11:15 a.m. Describe Your Forest 1-3 p.m.	7	8 Second Saturday walk 1-2:30 p.m.
9	10	11 Preschool program 10-11:15 a.m.	12	13 Preschool program 10-11:15 a.m. Woodland Native Plants 1-3 p.m.	14	15 Soup 'n Walk 11 a.m.-1:30 p.m.
16	17	18 Preschool program 10-11:15 a.m.	19	20 Preschool program 10-11:15 a.m. Science for Home School Students 1-2:30 p.m.	21 Mammals of the Arboretum Walk 10-11:30 a.m. Mushrooms and More 10 a.m.-3 p.m.	22 Mushrooms and More 10 a.m.-3 p.m.
23/31 Foraging 1-2:30 p.m.	24	25 Preschool program 10-11:15 a.m.	26 Cylburn Arboretum bus trip 8 a.m.-5 p.m.	27 Preschool program 10-11:15 a.m. Science for Home School Students 1-2:30 p.m.	28	29 Macro and Close-up Photography 8 a.m.-noon Art reception 3-5 p.m.

NOVEMBER

Sunday	Monday	Tuesday	Wednesday	Thursday	Friday	Saturday
		1 Regina Tumasella exhibit on view through November 25 Preschool program 10–11:15 a.m.	2 Nature as Muse 10 a.m.–noon A Tree Grows Quickly in the Forest 1–2:30 p.m.	3 Preschool program 10–11:15 a.m. Science for Home School Students 1–2:30 p.m.	4 Autumn Color in the Forest 1–3 p.m.	5 Guided Walk 10 a.m. Plein Air Painting 1–3:30 p.m.
6	7	8 Preschool program 10–11:15 a.m.	9	10 Preschool program 10–11:15 a.m. Science for Home School Students 1–2:30 p.m.	11	12 Soup 'n Walk 11 a.m.–1:30 p.m.
13	14	15	16	17 Science for Home School Students 1–2:30 p.m.	18	19 Sumi-e Painting 1–3 p.m.
20	21	22	23	24	25	26
27	28 Marilyn Banner exhibit opens	29	30			

DECEMBER

Sunday	Monday	Tuesday	Wednesday	Thursday	Friday	Saturday
				1 Science for Home School Students 1–2:30 p.m.	2	3 A Celebration of Winter See page 11 Guided Walk 10 a.m.
4	5	6	7 Nature as Muse 10 a.m.–noon	8 Basketry 10 a.m.–4 p.m.	9	10 Art reception 3–5 p.m.
11	12	13	14	15	16	17
18	19	20	21	22	23	24
25	26	27	28	29	30	31