



ART AT THE ARBORETUM

The Arboretum sponsors art exhibitions throughout the year, including an annual competition and outdoor environmental art. Call the Arboretum at 410-634-2847, ext. 0 or e-mail info@adkinsarboretum.org for gallery hours.



Nanticoke Moonrise, gouache

Notes & Essays—Eastern Shore Paintings

Elissa O'Loughlin

On view through May 28

Reception: Saturday, April 24, 3–5 p.m.

Steeped in the traditions of art at her job as a conservator at the Walters Gallery, Elissa O'Loughlin grinds her own pigments in order to achieve extraordinarily subtle gradations of color. Her rare sensitivity and skill with painting the nuances of color in nature were singled out with the first place award in the Arboretum's 2009 Art Competition.

Wetlands and Landscapes

Emmy Savage

May 31 through

July 30

Reception:

Saturday, June 19,

3–5 p.m.

This series of pastels was inspired by landscapes and waterscapes of Eastern Neck Island,

Blackwater Refuge, and Colchester Farm on the Eastern Shore of Maryland. This series explores the dramatic potential in color and light to express the moods of late afternoon, the mystery of shorelines in the distance, and our brief witnessing of these things.

Wetlands I, pastel



Outdoor Sculpture Invitational—Artists in Dialogue with Landscape

June 1 through September 15

Reception and walk: Saturday, June 19, 3-5 p.m.

Look for giant dragonflies and 3-D drawings with curving grapevines in the fifth biennial Outdoor Sculpture Invitational featuring eleven artists from the Mid-Atlantic region. Come visit the artists as they create their sculptures in the forest, meadow, and wetland during the last two weeks of May.

Bottomlands

Kelly Adams

August 2 through September 30

Building on her interest in the significance of wetlands to water quality and environmental health, North Carolina artist Kelly Adams explores the curious beauty and fragility of the bottomland forest in this series of bold charcoal and graphite drawings.

Ripple Effect, graphite





ADULT PROGRAMS

Guided Walks

SATURDAYS, APRIL THROUGH NOVEMBER, 11 A.M.

Explore the Arboretum’s diverse plant communities on a guided walk led by an Arboretum docent naturalist. Explore the bottomland forest and upland paths, meander through majestic beech trees, traverse the native meadows, and follow the narrow Tuckahoe Creekside path to glimpse creek waters and wildflowers. Guided walks are free for members and free with admission for the general public. Tours begin at the Visitor’s Center and last approximately one hour.

To schedule a guided walk for 10 or more participants, contact Ginna Tiernan, Adult Program Coordinator, at 410-634-2847, ext. 27 or gtiernan@adkinsarboretum.org.



Noon Tea in the Trees Journaling

SATURDAYS, MAY 1 AND JUNE 5. 11 A.M. PUBLIC GUIDED WALK; NOON TEA IN THE TREES JOURNALING SESSION
Free with admission

Take a break for an informal Saturday morning walk. Stroll through the Arboretum’s varied habitats—delightful places to gather ideas and impressions. Then return to the Visitor’s Center or Nursery for tea and homemade goodies and a chance to see your ideas germinate into language during a brief free writing session. Bring your favorite pen or pencil and a small journal or notebook. Plan to attend the next time and add more thoughts to your journal. No previous writing experience necessary. Pre-registration is required.

**REGISTER ONLINE FOR PROGRAMS—IT’S EASY!
VISIT WWW.ADKINSARBORETUM.ORG.**

Healthy Soils

WEDNESDAY, APRIL 21, 10–11:30 A.M.
FEE: \$10 MEMBERS, \$15 GENERAL PUBLIC

Andrew Ristvey, Ph.D. will provide an introduction to soil health as it relates to plant nutrition. Learn basics about the physical and chemical properties of soils and what gardeners can do to change those properties to extract the most from their soils and benefit their plants. Nutrient information will also be presented. Dr. Ristvey is the University of Maryland regional extension specialist for commercial horticulture.

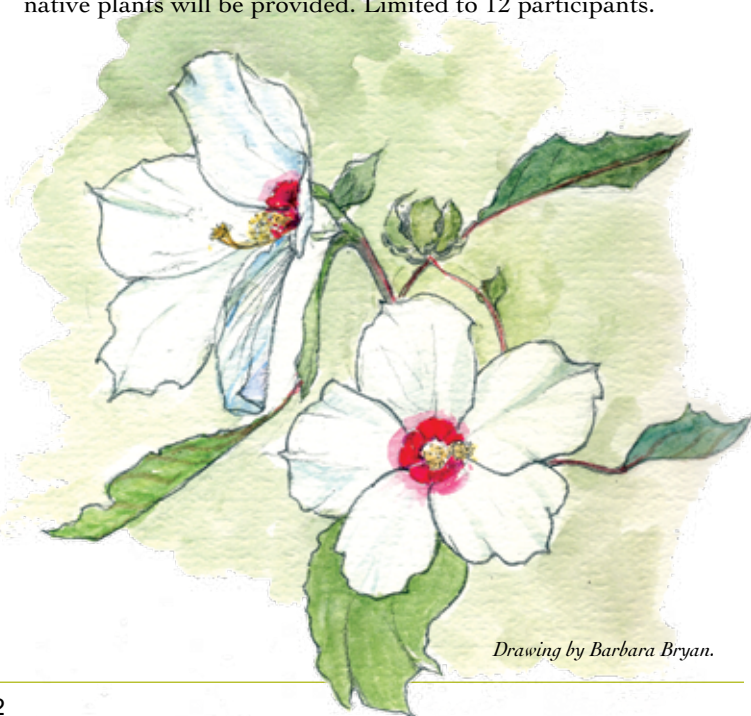
Landscape Design Workshop

WEDNESDAY, APRIL 28, 8:30 A.M.–4:30 P.M.
FEE: \$75 MEMBERS, \$90 GENERAL PUBLIC

Does your property lack beauty and distinctive character? Do you want to create attractive outdoor living spaces? Offered again by popular demand, this workshop will address typical challenges of Eastern Shore homeowners. Four experienced landscape designers and avid gardeners will lead participants through an all-day intensive planning session. Come with your challenges and dreams, and leave with a landscape plan, ideas, and confidence to transform your home landscape for your enjoyment and pride.

Workshop leaders are Arboretum Executive Director Ellie Altman, landscape architect Barbara McClinton, formerly of the Baltimore landscape architecture and land planning firm Daft, McCune, Walker, and landscape designers Chris Pax and Edward Colohan.

Bring lunch. A continental breakfast and break refreshments will be provided. Also bring a property plat, photos, and other documentation of your property. Worksheets and handouts on native plants will be provided. Limited to 12 participants.



Drawing by Barbara Bryan.

The Brother Gardeners: Botany, Empire, and the Birth of an Obsession

TUESDAY, MAY 4, 4–5 P.M. WITH A RECEPTION TO FOLLOW
FEE: \$15 MEMBERS, \$18 GENERAL PUBLIC



In this beautifully illustrated talk, Andrea Wulf tells the story of a small group of 18th-century naturalists that made England a nation of gardeners. It's the story of a garden revolution that began in America when the farmer John Bartram sent hundreds of boxes filled with seeds that would transform the English landscape forever. There is also Peter Collinson, a Quaker merchant; Philip Miller, author of the *Gardeners Dictionary*; the cantankerous Swedish botanist Carl Linnaeus; and Joseph Banks and Daniel Solander, who joined Captain Cook's *Endeavour* on the greatest voyage of discovery in modern times.

Together they introduced the lustrous evergreens, fiery autumn foliage, and colorful shrubs that shaped the Georgian landscape; they brought science and rational thought to horticulture; and they risked their lives to find new exotic blooms and

towering trees. Friends, rivals, and enemies, their correspondence, collaborations, and squabbles make for a riveting human drama set against the backdrop of the emerging British Empire and America's magnificent forests. As botany and horticulture became a science, the garden became the Eden for everyman.

Trained as a design historian at the Royal College of Art in London and now a full-time writer, Wulf is the author of two books and has written for the *Sunday Times*, *Financial Times*, *The Garden*, and the *Architects' Journal*. She regularly writes reviews for *The Guardian*, *Times Literary Supplement*, and the *Mail on Sunday* and also works as a creative writer for a new botanic garden in Singapore. www.andreawulf.com. Also see the Bartram's Garden tour opportunity on page 7.



From the Tree's Perspective

WEDNESDAY, MAY 5, 10–11:30 A.M.
FEE: \$10 MEMBERS, \$15 GENERAL PUBLIC

Richard Murray will introduce the concepts of tree function and defense from the tree's perspective. He will provide an overview of the basics of tree biology and how trees influence ecological associations and processes. Using samples and a hands-on approach, he will discuss how we can improve our efforts to establish and preserve trees.



Murray's lifelong interest in ecology led him to a career in arboriculture that he has enjoyed for 35 years. He recently published *The Tree Biology Notebook: An Introduction to the Science and Ecology of Trees*, in which he offers a holistic perspective of tree ecology, including how trees interact with their environment and how they affect our lives. Murray studied extensively with the late Dr. Alex Shigo, the educator and plant pathologist who is widely considered the "father of modern arboriculture." Currently a licensed Maryland Tree Expert and an ISA Certified Arborist, he owns and operates Shannon Tree and Landscaping, Inc.

Poetry Reading by Sue Ellen Thompson

SUNDAY, MAY 16, 3–5 P.M.
FEE: \$15 MEMBERS, \$18 GENERAL PUBLIC

Sue Ellen Thompson will read from her most recent book, *The Leaving: New & Selected Poems*, as well as from her new manuscript of work written largely about living on the Eastern Shore.

The author of four books of poetry, Thompson is also the editor of *The Autumn House Anthology of Contemporary American Poetry*. Her work has been read by Garrison Keillor on "The Writer's Almanac" and featured in former U.S. Poet Laureate Ted Kooser's nationally syndicated newspaper column, "American Life in Poetry." She has taught at Middlebury College, Wesleyan University, Binghamton University, and Central Connecticut State University, and for 13 years served as a scholar, fellow, and administrative staff member at the Bread Loaf Writers' Conference in Vermont. The Maryland Library Association recently selected her as the winner of the 2010 Maryland Author Award, given to a poet every four years for his or her body of work. Two of Thompson's books—*The Leaving* and *The Golden Hour*—were nominated for the Pulitzer Prize. Following the reading, she will answer audience questions and sign copies of *The Golden Hour*. www.sueellenthompson.com.



(Adult Programs continued on page 4)





ADULT PROGRAMS, continued

Culinary Culture of the Underground Railroad

SATURDAY, MAY 22, 1–2:30 P.M.

FEE: \$10 MEMBERS, \$15 GENERAL PUBLIC, \$20 FAMILIES

Join Michael Twitty, author and interpreter of African American folkways, to explore the culinary culture of slaves and freedom seekers on the Underground Railroad. Twitty's extensive research on African American culinary history and his desire for authenticity in the interpretation of this history have led him to work with the Smithsonian, Colonial Williamsburg, Magnolia Plantation & Gardens, and many others, in addition to collaborating with Landreth Seeds on its new African American Heritage Seed Collection. His first book is *Fighting Old Nephew: The Foodways of Enslaved African Americans in Maryland 1654–1864*. www.afrofoodways.com.

The Forest as Muse

WEDNESDAY, JUNE 9, 1–3 P.M.

FEE: \$10 MEMBERS, \$15 GENERAL PUBLIC

Join published poet and Arboretum teacher Jenny Houghton for a creative writing workshop inspired by the beauty of Adkins Arboretum. Ideas will flow like the Blockston Branch as participants spend contemplative time in the woods, enjoy a sampling of nature writing from poets past and present, and share their own verse in the Arboretum gallery.

Houghton's work has appeared in a variety of literary publications, including *The Pearl*, *Lite Magazine*, *Grub Street News*, and *Maryland Poetry Review*.

for you

one milkweed pod
plucked along
the south meadow
crossing.

here.
hold it gently
like a sleeping bird.

the feathers?
underneath,
silken seeds nestled
promise upon
promise.

now hurry,
the wind is waiting.

there are a thousand
wishes
in the palm
of your hand.



Milkweed drawing by Marion Price.

Urban and Suburban Meadows

SATURDAY, JUNE 12, 1–2:30 P.M.

FEE: \$15 MEMBERS, \$18 GENERAL PUBLIC



Author and photographer Catherine Zimmerman combines her expertise in photography, storytelling, environmental issues, horticulture, and organic practices to offer meadow-scaping as a lawn alternative. Zimmerman weaves her personal journey of changing her own landscaping choices into a guide that demonstrates both the need to change current, detrimental landscaping practices and the practical know-how and resources to accomplish that change. *Urban and Suburban Meadows* demonstrates land stewardship practices that are both ecologically sound and aesthetically appealing.

An award-winning director of photography, Zimmerman has over 30 years of experience in documentary filmmaking with an emphasis on education and environmental issues. Her environmental films include documentaries on global warming for CNN Presents and New York Times Television; *Save Rainforest/Save Lives*; *Fresh Farm Markets*; *Wildlife Without Borders: Connecting People and Nature in the Americas*; and *Discovery Creek Children's Museum*. She is also a certified horticulturist and landscape designer based in the Washington, DC, metropolitan area. She is accredited in organic land care through the Northeast Organic Farmers Association and has designed and taught a course in organic landscaping for the USDA Graduate School horticulture program.

Urban and Suburban Meadows will be available for purchase; the author will sign copies following the program.

Pre-registration is required for all programs. Register online at www.adkinsarboretum.org, call 410.634.2847, ext. 0, or e-mail info@adkinsarboretum.org.



Block Printing

FRIDAY, JUNE 11, 10 A.M.–4 P.M.

FEE: \$70 MEMBERS, \$85 GENERAL PUBLIC

Join Martha Graham to learn the technique for block printing, from establishing a successful design to inking and printing your block. Graham has loved art since she was small, holds a degree in art history and a minor in graphic design, and has studied art at University of Richmond, Virginia Commonwealth, Parson School of Design, Moore College of Art, and Salisbury University. She has written and illustrated two books, both of which are available in the Arboretum bookstore. Workshop limited to 10 participants; all materials are included in the program fee.

Quilting: Historic Perspective and Beginner's Workshop

FRIDAY, JUNE 25, 10 A.M.–3 P.M.

FEE: \$40 MEMBERS, \$45 GENERAL PUBLIC

For Janet Pfeffer, quilting is both a calling and a passion. Her mission is to create quilts that both bring joy and comfort and raise money for good causes. She especially likes making memorial and celebratory quilts that incorporate meaningful clothing, colors, and themes. Join this program for a selective overview of quilting through time, with special attention to the Quilters of Gee's Bend, followed by a workshop to create your own potholder or placemat. Materials will be provided, but participants are welcome to bring their own needles, thread, scissors, clothing, or other fabric for transformation. Workshop limited to 10 participants. <http://janetpfefferquilts.com/index.html>.

T-Shirt Quilt

SATURDAY, JULY 31, 10 A.M.–NOON

FEE: \$25 MEMBERS, \$30 GENERAL PUBLIC

Join Janet Pfeffer and learn to transform a T-shirt collection into an heirloom quilt. Participants will prepare the T-shirts, create layouts, and ready the project for finishing at home. Bring: 6 to 16 T-shirts, an iron, straight pins, safety pins, scissors, and 1.5 yards of cotton fabric for framing the T-shirts. Workshop is limited to 5 participants.



((Adult Programs continued on page 6))





ADULT PROGRAMS, cont'd

Register online at www.adkinsarboretum.org, call 410.634.2847, ext. 0, or e-mail info@adkinsarboretum.org.

Driftwood Carving

FRIDAYS, JULY 9, 16, 23, AND 30, 10 A.M.–NOON
FEE: \$75 MEMBERS, \$95 GENERAL PUBLIC

Tom Yates has been creating his unique brand of wood sculptures since 1993. Working out of his studio on Maryland's Eastern Shore, he finds inspiration on his long walks along the shores and inlets of the Chesapeake. He 'sees' his creations in the root structures of old trees and brings them to life through a detailed process of design, carving, and finishing. Join him for this four-week program to learn the fundamentals of carving and how to create what you 'see' in unique pieces of wood. The program will be offered at the Nursery in the open air tin-roofed shelter.

Materials to bring: Dremel or similar power carving tool, wood bits for power tool (at least four different bits are needed), safety glasses, breathing mask, and a piece of driftwood or chunk of soft wood (pine, sassafras, cedar, poplar, or cherry, but no oak or locust). The instructor will provide extra pieces of wood. Limited to 5 participants.



Native Plants in Vases

THURSDAY, AUGUST 5, 1–3 P.M.
FEE: \$10 MEMBERS, \$15 GENERAL PUBLIC

Join longtime Arboretum docent and Holiday Greens workshop teacher Nancy Beatty as she demonstrates three styles of flower arranging using native plants. Nancy's passion for native plants and organic gardening brought her to the Arboretum and has led her to a successful and rewarding career in gardening. As proprietor of Sweet Bay Garden Design, Nancy arranges flowers for weddings, parties, and events and designs, creates, and maintains flower, vegetable, and herb gardens for her customers.





TRIPS AND WALKS

Bartram's Garden Field Trip

FRIDAY, JUNE 18, 8 A.M.–5:30 P.M.
FEE: \$110 MEMBERS, \$125 GENERAL PUBLIC INCLUDES TRANSPORTATION, LUNCH, TWO CUSTOMIZED GUIDED TOURS, AND ENTRANCE FEES

Spend a day at America's first botanic garden, which showcases the Bartram collection of North American plants and the Bartram house, a one-of-a-kind structure and National Historic Landmark. The day is tailored for the Arboretum group and includes a guided tour by head gardener Todd Greenberg, who will discuss the rare collection of native plants, specimen trees and shrubs, and edibles onsite, as well as the organic gardening practices at the gardens. The day will also include a behind-the-scenes curator's talk that will dig deeper into the history and stories of Bartram's Garden with an interactive discussion and viewing of historic objects, documents, and archaeological artifacts that provide an intimate glimpse into the hidden story of the site. A catered lunch will be served in one of the historical structures on the property.



Turk's-cap Lily
Lilium superbum

Soup 'n Walks

Nature, Nurture, and Nutrition

SATURDAYS, MAY 15 AND JUNE 19,
11 A.M.–1:30 P.M.
FEE: \$18 MEMBERS, \$20 GENERAL PUBLIC
PRE-REGISTRATION REQUIRED; REGISTER ONLINE OR
CALL 410-634-2847, EXT. 0

Discover sure signs of spring and summer on a guided walk with a docent naturalist. Following the walk, enjoy a delicious and nutritious lunch along with a brief lesson about the meal's nutritional value. Copies of recipes are provided.

May 15
Check Out the Beautiful View of Tuckahoe Creek and Beyond
 Mountain laurel, beech tree, tulip tree, black cherry tree blossoms, pink lady's slipper, Solomon's seal, and may apple fruit

MENU

Kale, apple, and lentil soup
Quinoa with cranberries, apricots, and pecans
Ricotta cheese bread with cherry jam
Black Forest cherry cake

June 19
Find the Green Summer Ferns among the Cool Blooms
 Lady, cinnamon, New York, netted chain, and Christmas ferns; Indian cucumber; bluets; blackberry, deerberry, and arrowwood blooms

MENU

Minted cantaloupe soup
Green bean salad with honey cider vinaigrette
Double oat bread with blackberry jam
Raspberry rhubarb crisp





PROGRAMS FOR CHILDREN & FAMILIES

Mother Nature Programs **NEW!**

FRIDAYS, MAY 14, 21, 28, AND JUNE 4
10 A.M.–11:15 A.M.

FEE PER SESSION FOR MOM AND CHILD: \$6 MEMBERS,
\$8 GENERAL PUBLIC

Join fellow moms and tots for stroller-friendly walks through the Arboretum grounds followed by coffee, tea, treats, and social time. Enjoy the beauty of spring, meet other moms, and wear out the little ones in time for their afternoon nap! Programs are coordinated by Arboretum teacher Jenny Houghton.



Drawing by Barbara Bryan.

MARK YOUR CALENDAR!



Fall Plant Sale Weekend

MEMBERS-ONLY SALE
FRIDAY, SEPTEMBER 10,
10 A.M.–6 P.M.

PUBLIC SALE
SATURDAY AND SUNDAY,
SEPTEMBER 11 AND 12,
10 A.M.–4 P.M.

Fall is for planting. Select from the region's largest selection of native plants to support the health of the Chesapeake Bay.

Magic in the Meadow – A Twilight Cabaret



SATURDAY, SEPTEMBER 18, 6–9:30 P.M.

Join a fun-filled evening of music, dining, and dancing. Entertainment will include versatile pianist Stef Scaggiari, vocalist Dan Saunders, and lyrist Angela Casson of New York City. Silent and live auctioning of superb travel packages, dining, and more will round out the evening—all to benefit the Arboretum's education programs.



Saturday, October 2, 2010
10 a.m.–2 p.m. rain or shine

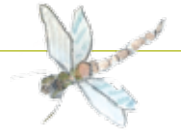
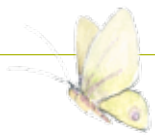
All proceeds to support the Caroline County Humane Society.
For more information or to pre-register, call Steve at 410-820-1600 or
kiwini1@yahoo.com, www.carolinehumane.org

Fall Family Festival

SATURDAY, OCTOBER 9, 11 A.M.–3 P.M.

Storytelling, live music, games and crafts, Indian lore, and refreshments. A special day for young families.





CREATIVE KIDS' CAMPS

Summertime is wonder time! If a child in your family enjoys spending time outdoors, consider a week of summer fun at one of the Arboretum's Creative Kids summer camps. These ever-popular day camps foster an appreciation for and love of the natural world through hands-on experiential learning. Camp themes for 2010 include:

CAMP BUMBLEBEE—THINGS WITH WINGS

AGES 3–5

JUNE 14–18, 9:30–11:30 A.M.

FEE: \$80 MEMBERS, \$90 GENERAL PUBLIC, \$10 DISCOUNT PER ADDITIONAL CAMPER



Learn about the winged wonders that love the Children's Funshine Garden. Campers will explore the garden and surrounding habitats in search of things with wings, discussing what it is about the habitat that makes it home for these creatures. Stories and crafts are combined with games and guided exploration. Snacks will be provided. Parents are welcome to stay with their children or drop them off. Campers must be potty trained.

CAMP PAW PAW—CAMP INSPIRATION!

AGES 6–8

JUNE 21–25, 9 A.M.–NOON

FEE: \$125 MEMBERS, \$145 GENERAL PUBLIC, \$10 DISCOUNT PER ADDITIONAL CAMPER

Nature has inspired artists and scientists through the centuries. Through exploration, campers will look to the natural world for inspiration to create with art media and through scientific experimentation. While this camp will approach nature study through various art media, activities will be deeply rooted in the ecological sciences. Traditional camp activities will round out the camp day.

CAMP EGRET: DISCOVERY DAYS!

AGES 9–12

JUNE 28–JULY 2, 9 A.M.–3 P.M.

FEE: \$180 MEMBERS, \$200 GENERAL PUBLIC INCLUDES \$35 MATERIALS FEE. \$10 DISCOUNT PER ADDITIONAL CAMPER

Spend a week discovering the great outdoors. Get wet and dirty, climb trees and build forts, take a trip in a "time machine" to discover the historical values of the ecosystems of the Eastern Shore, and become a sleuth to track the habits and haunts of the Arboretum's wildlife and investigate why native plants are so important to them. Campers will engage in traditional camp activities, ecological investigations through the arts, and the fascinating world of botany to discover the interconnectedness of people, history, ecology, and art.

CAMP POLLYWOG: WHERE THE WILD THINGS ARE

AGES 3–5

JULY 5–9, 9:30–11:30 A.M.

FEE: \$80 MEMBERS, \$90 GENERAL PUBLIC, \$10 DISCOUNT PER ADDITIONAL CAMPER

Explore different ecosystems every day on visits to the Arboretum's streams, meadows, wetlands, and forests. Campers will catch frogs, crayfish, tadpoles, and turtles; hike the trails; examine what's growing in the Children's Garden; get wet; play games; and make new friends. Stories and crafts are combined with games and guided exploration. Snacks will be provided. Parents are welcome to stay with their children or drop them off. Campers must be potty trained.



APRIL

21 Healthy Soils, 10–11:30 a.m.

28 Landscape Design Workshop 8:30 a.m.–4:30 p.m.

24 Guided Walk 11 a.m., Art Reception 3–5 p.m.

MAY

Sunday	Monday	Tuesday	Wednesday	Thursday	Friday	Saturday
Elissa O'Loughlin exhibit on view through May 28.						1 Guided Walk 11 a.m. Tea in the Trees Journaling noon–1 p.m.
2	3	4 The Brother Gardeners 4–5 p.m.	5 From the Tree's Perspective 10–11:30 a.m.	6 Plant Preview Walk 1–2 p.m.	7 Members-Only Sale Day 10 a.m.–6 p.m.	8 Spring Native Plant Sale Public Sale Day 10 a.m.–4 p.m. Guided Walk 11 a.m.
9 Spring Native Plant Sale Public Sale Day 10 a.m.–4 p.m.	10	11	12	13	14 Mother Nature 10–11:15 a.m.	15 Guided Walk 11 a.m. Soup 'n Walk 11 a.m.–1:30 p.m.
16 Poetry Reading: Sue Ellen Thompson 3–5 p.m.	17	18	19	20	21 Mother Nature 10–11:15 a.m.	22 Guided Walk 11 a.m. Underground Railroad 1–2:30 p.m.
23/30	24/31 Emmy Savage exhibit on view through July 31.	25	26	27	28 Mother Nature 10–11:15 a.m.	29 Guided Walk 11 a.m.

JUNE

Sunday	Monday	Tuesday	Wednesday	Thursday	Friday	Saturday
		1 Outdoor Sculpture Invitational on view through September 15.	2	3	4 Mother Nature 10–11:15 a.m.	5 Guided Walk 11 a.m. Tea in the Trees Journaling noon–1 p.m.
6	7	8	9 The Forest as Muse 1–3 p.m.	10	11 Block Printing 10 a.m.–4 p.m.	12 Guided Walk 11 a.m. Urban and Suburban Meadows 1–2:30 p.m.
13	14 Camp Bumblebee begins	15	16	17	18 Bartram's Garden Trip 8 a.m.–5:30 p.m.	19 Guided Walk 11 a.m. Soup 'n Walk 11 a.m.–1:30 p.m. Art Reception 3–5 p.m.
20	21 Camp Paw Paw begins	22	23	24	25 Quilting 10 a.m.–3 p.m.	26 Guided Walk 11 a.m.
27	28 Camp Egret begins	29	30			



SPRING / SUMMER CALENDAR

JULY

Sunday	Monday	Tuesday	Wednesday	Thursday	Friday	Saturday
				1	2	3 Guided Walk 11 a.m.
4	5 Camp Pollywog begins	6	7	8	9 Driftwood Carving 10 a.m.–noon	10 Guided Walk 11 a.m.
11	12	13	14	15	16 Driftwood Carving 10 a.m.–noon	17 Guided Walk 11 a.m.
18	19	20	21	22	23 Driftwood Carving 10 a.m.–noon	24 Guided Walk 11 a.m.
25	26	27	28	29	30 Driftwood Carving 10 a.m.–noon	31 Guided Walk 11 a.m. T-shirt Quilt 10 a.m.–noon

AUGUST

Sunday	Monday	Tuesday	Wednesday	Thursday	Friday	Saturday
1	2 Kelly Adams exhibit on view through September 30	3	4	5 Native Plants in Vases 1–3 p.m.	6	7 Guided Walk 11 a.m.
8	9	10	11	12	13	14 Guided Walk 11 a.m.
15	16	17	18	19	20	21 Guided Walk 11 a.m.
22	23	24	25	26	27	28 Guided Walk 11 a.m.
29	30	31				





ADKINS ARBORETUM

P.O. Box 100
Ridgely, MD 21660
410-634-2847
www.adkinsarboretum.org

NON PROFIT
ORG
US POSTAGE
PAID
MAIL MOVERS

Address Service Requested

2010 Native Plant Nursery Spring Opening Weekend

The Arboretum offers the region's largest selection of native plants. The Native Plant Nursery Opening Weekend marks the opening of the plant nursery for the growing season. Following the Opening Weekend, the Arboretum nursery will be open to the public weekdays from 10 a.m. to 4 p.m.

For additional information, call 410-634-2847 ext. 0, e-mail info@adkinsarboretum.org, or visit www.adkinsarboretum.org.

PLANT PREVIEW WALK THURSDAY, MAY 6, 1 P.M.

Learn more about plants for sale on this guided preview walk. Plants will not be for sale until May 7, but the walk is a great opportunity to learn about new offerings and old favorites.

MEMBERS-ONLY SALE FRIDAY, MAY 7, 10 A.M.–6 P.M.

Members welcome! Become a member and shop on the Members-Only Sale Day.

PUBLIC SALE DAYS SATURDAY AND SUNDAY, MAY 8 AND 9, 10 A.M.–4 P.M.

Plants for sale will include a broad selection of flowering trees and shrubs, perennials, ferns, and grasses for spring planting. Native flowers and trees make colorful additions to home landscapes and provide food and habitat for wildlife. Arboretum staff and volunteers will be on hand to answer plant and gardening questions. The Arboretum gift shop will be open and will offer books and other great gifts for gardeners. Members receive a 10% discount on plants and gift shop purchases.

