



ART EXHIBITS

The Arboretum sponsors art exhibitions throughout the year, including an annual competition and outdoor environmental art. Call 410-634-2847, ext. 0 or e-mail info@adkinsarboretum.org for gallery hours.

Known for his highly detailed studies of wildlife, British-born artist **Jonathan Shaw**, of Wye Mills, will present new works in *A Brush with Nature*, on view through February 1. Fifty percent of the proceeds of sales of this popular artist's work will be donated to the Arboretum. The show includes paintings of native Eastern Shore animals and plants in his familiar precise style, but as Shaw loves a challenge, he will also feature recent works that experiment with styles and techniques new to him.



The Padded Perch, Jonathan Shaw, acrylic on board, 23" x 20"

The Arboretum's annual juried art show, the **2013 Art Competition**, *Discovering the Native Landscapes of Maryland's Eastern Shore*, will be on view February 4 through March 29. Now in its fourteenth year, this show draws entries in many different media by artists from the Mid-Atlantic area and beyond. The juror for this year's show is Alex Castro,

Adjunct Professor of Art at Washington College, who has recently introduced the college's first classes in environmental art. There will be a reception Saturday, February 16 from 3 to 5 p.m.



"Vol. I, No. 8,"
One Hundred Footsteps
series, Katherine Kavanaugh,
archival ink on rice paper,
mounted on paper,
5.7" x 3.5"

I've made two marks on the world.
Two boys, now men, have started walking.
Their prints are faint today
but soon the weight of mine, their father's and
all of history will press. Take care, my sons.

One Hundred Footsteps is a unique collaboration between writer **Jennifer Wallace** and visual artist **Katherine Kavanaugh**, both of Baltimore. In this limited edition work, fifty of Wallace's haiku-like poems are paired with fifty small collage drawings by Kavanaugh. Although the poems and images aren't meant to illustrate one another, they share parallel contemplative moods. On view April 1 through May 31, this meditative exhibit was inspired by a medieval Japanese collaborative poetic form, the renga, often composed of 100 verses. There will be a reception Saturday, April 20 from 3 to 5 p.m.



Arbor Day Run

Saturday, April 6

Registration 8–8:45 a.m., Start time 9 a.m.

5K Fee: \$15; \$20 day of event

Family Fun Run/Walk Fee: \$10/family

Join fellow runners and nature enthusiasts for the seventh annual Arbor Day Run. The event, which also features a 5K Run and a one-mile Family Fun Run/Walk, will kick off with a Kids' 100 Yard Dash at 8:45 a.m. Participants will catch glimpses of spring as they traverse the cross-country course plotted along the Arboretum's network of scenic forest and meadow paths. Prizes will be awarded and refreshments provided. Register online, call 410-634-2847, ext. 0, or e-mail info@adkinsarboretum.org.

Twelfth Night by William Shakespeare

May 4 at 6 pm
May 5 at 3 pm

Proceeds benefit the Arboretum and Shore Shakespeare.

"If Musick be the Food of Love ... PLAY ON!"

Shakespeare's TWELFTH NIGHT comes to The Meadow!

It's funny, it's sexy, it's al fresco. . . it's Shakespeare! Mark the date. Bring a picnic. Relax under the stars. Enjoy this classic comedy about love and mistaken identity. Directed by Shelagh Grasso. Adults \$15, students \$10. Proceeds benefit Adkins Arboretum and Shore Shakespeare.

For more information, visit shoreshakespeare.com. Tax-deductible donations are encouraged and may be made to Adkins Arboretum and designated for the benefit of Shore Shakespeare.

SPRING NATIVE PLANT SALE *at the Nursery!*

The Arboretum offers the region's largest selection of native plants. The Native Plant Nursery Opening Weekend marks the opening of the plant nursery for the growing season. Following the Opening Weekend, the Nursery will be open to the public weekdays from 10 a.m. to 4 p.m. and weekends by appointment. Members, including those who join on any sale day, receive a 10% discount on plants, gift shop items, and all books. Members who join at the Contributor (\$100) level and above receive a 20% discount on plants. Sale days are crowded, so please leave dogs at home. For additional information, call 410-634-2847 ext. 0, e-mail info@adkinsarboretum.org, or visit adkinsarboretum.org.

Members-only Sale

Friday, April 12, 10 a.m.–4 p.m.

Shop the Members-only Sale for the best selection. New members are welcome! Members receive a 10% discount on plants; members at the Contributor (\$100) level and above receive a 20% discount. Members may place presale orders at www.adkinsplants.com March 3 through 31.

Public Sale Days

Saturday, April 13 and Sunday, April 14, 10 a.m.–4 p.m.

Prepare for spring in the garden! The region's largest selection of ornamental native plants will be for sale, including a broad selection of flowering trees and shrubs, perennials, ferns, and grasses for spring planting. Ornamental native flowers and trees make colorful additions to home landscapes and provide food and habitat for wildlife. Master Gardeners will be available to answer questions, and Arboretum docents will be on hand to lead guided walks. The sale benefits the Arboretum's education programs and introduces the public to the beauty and benefit of gardening with native plants.

Used Book Sale

The Arboretum is accepting donations of gardening and nature-themed books and magazines for a book sale during the plant sale. Donations may be dropped off at the Arboretum any day of the week between 10 a.m. and 4 p.m. Shop for books and magazines at great prices on the sale days!



Registration is required for all programs. Register online at adkinsarboretum.org, call 410-634-2847, extension 0, or e-mail info@adkinsarboretum.org. Please arrive at least 10 minutes prior to program start.

Create an account on the Arboretum website to make program registration and membership transactions quick and easy! Enter your contact information, create a password, and the system will remember you each time you register. Visit adkinsarboretum.org to create your online account.

Weather and Cancellations

Programs and walks will be held in all types of weather, including light rain or snow. If the Arboretum decides to cancel a program due to threat of inclement weather, you will be contacted by phone or e-mail and offered a refund or an opportunity to reschedule. If you have any doubts or concerns if a program is to be held, please call 410-634-2847, ext. 0 and/or check the website.

Beginning Drawing

Mondays, January 21, 28, February 4, 11, 18, 10 a.m.–12:30 p.m.

Fee: \$110 members, \$140 general public

This five-session class taught by **Lee D'Zmura** will focus on drawing processes and skills. Emphasis will be placed equally on freehand drawing and technical skill to enhance accuracy and overall composition. A list of materials will be provided. Registration required. Limit: 12

Introduction to Nature Journaling

Wednesday, March 20, 10 a.m.–2:30 p.m.

Fee: \$35 members, \$45 general public

This workshop with **Lee D'Zmura** presents the popular pastime of nature or travel journaling. Participants will learn techniques to quickly and spiritedly record plants, animals, experiences, and places as they happen. Emphasis will be placed on initial sketches, text, and color rendering. Bring a sack lunch; a list of materials will be provided. Registration required. Limit: 12

Nature Journaling with Spring Ephemerals

Wednesday, April 24, 10 a.m.–3:30 p.m.

Fee: \$35 members, \$45 general public

Join **Lee D'Zmura** to focus on the many spring ephemerals in bloom at the Arboretum. Following a brief discussion about these early blooming flowers and techniques to capture their beauty, the class will sketch outdoors and return to compose journal entries. Bring a sack lunch; a list of materials will be provided. Registration required. Limit: 12

Close-up Photography

Saturday, April 20, 8 a.m.–noon

Fee: \$45 members, \$60 general public

Spring at the Arboretum is the ideal time to photograph close-up images of colors, textures, and patterns and turn ordinary images into powerful abstracts. Instructor **Joshua Taylor Jr.** will help participants learn how to capture striking images with basic photo equipment. The use of extension tubes, close-up filters, diffusers, and reflectors will be demonstrated during the shooting session with the instructor.

Participants will receive online pre-workshop instruction and an illustrated handout. The workshop also includes a morning photo shoot with the instructor and a classroom session on image enhancement techniques. Participants will have the opportunity to e-mail the instructor two JPEG images from the workshop for a written critique. Bring ALL photo equipment, including a digital memory card, extra batteries, and camera manual. A tripod is optional, but highly recommended. Please be reminded that point-and-shoot cameras have limited options, but they are welcome and can work quite well for close-ups.

Taylor has presented photography workshops at the Smithsonian National Orchid Show, the U.S. National Arboretum, and the U.S. Botanic Garden, as well as for public gardens, preserves, and horticultural societies across the region. In addition to teaching in the Smithsonian Studio Arts Program and at the Corcoran School of Art and Design, he exhibits his work regularly and speaks at camera and garden clubs. Registration required. Limit: 12





Sticks and Stones: A Garden's Bones

Friday, March 22, 1–2 p.m.

Fee: \$15 members, \$20 general public

The first time he saw a rustic fence made of eastern red cedar, **Pierre Moitrier** immediately fell under the spell. He was compelled to start building with this wonderful material. Along the way, he found a true outlet for his creativity. Drawing inspiration from nature, his travels, and the charm of the old villages in France, he started creating one-of-a-kind structures for the garden. In this talk, Pierre will take you from harvest to construction and show you how to transform a mere pile of cedar twigs into benches, fences, arbors, and gazebos that showcase intricate patterns. While presenting beautiful slides of his work, he will share valuable insights on construction techniques. Walk out inspired and ready to build your own rustic cedar structure!

Moitrier is a professional gardener at Designs for Greener Gardens, an Annapolis-based fine gardening company he owns and operates with his wife, Nancy. After leaving his native France twelve years ago with a degree in sustainable rural land use, Pierre landed in the garden universe. He quickly developed a strong interest in gardening and a true passion for creating hardscapes for the garden, including rustic stonework, magical garden follies, and creative woodwork using native *Juniperus virginiana* in its rough form. His work has been featured in Adrian Higgins' column, on HGTV, and in *American Nurseryman*, among others.



Registration is required for all programs. Register online at adkinsarboretum.org, call 410-634-2847, extension 0, or e-mail info@adkinsarboretum.org. Please arrive at least 10 minutes prior to program start.

Winter Tree ID— Learn Your Buds and Bark

Sunday, February 24, 1–2:30 p.m.

Fee: \$15 members, \$20 general public

Learn how to identify some common trees of the East Coast by their shape, buds, and bark. Arboretum Science Advisor **Mary Travaglini** will also guide discovery of clues on the ground and assess the habitats we visit to help sleuth out trees in winter. Come away knowing your trees without their leaves! Registration required.



Peatlands and Bog-like Habitats on the Delmarva Peninsula

Saturday, March 2, 1–2:30 p.m.

Fee: \$15 members, \$20 general public

Bogs are wetland habitats with deep deposits of peat, or partially decomposed plant material. Because most bogs develop in areas of the world where glaciers formerly occurred, there are no true bogs on the Delmarva Peninsula. There are, however, wetland habitats on the Peninsula where peat is well formed and bog-like conditions develop, including habitats such as Atlantic white cedar swamps, acidic fens, and interdunal swales. These habitats often support carnivorous plants that are adapted to the unique environmental conditions that result from peat formation. Join **Bill McAvoy** to learn more about the ecology and flora of these fascinating habitats.

McAvoy is the botanist for the Delaware Natural Heritage and Endangered Species Program and has studied and published on both the vascular and nonvascular flora of the Delmarva Peninsula for over 20 years. Registration required.



Sarracenia purpurea

Herpetology Walk: Amphibians and Reptiles

Saturday, March 16, 10–11:30 a.m.

Free with admission

Join **Scott Smith** to learn about the frogs, turtles, snakes, and salamanders that inhabit the Arboretum wetlands and forest. Scott is the Maryland DNR-Natural Heritage Program Wildlife Diversity Ecologist and Amphibian and Reptile Atlas project coordinator for Talbot and Caroline counties. Learn more about amphibians and reptiles at http://www.dnr.state.md.us/wildlife/Plants_Wildlife/herps/index.asp. Reservations requested.



Spring Ephemerals—The Fleeting Flowers

Sunday, April 21, 1–2:30 p.m.

Fee: \$15 members, \$20 general public

First thing in spring, a dazzling diversity of flowers emerges, but many of us hardly blink before they are gone. Join Arboretum Science Advisor **Mary Travaglini** on a walk to find these early spring flowers, the harbingers of spring!

Mary holds a bachelor's of science from Cornell University and a master's in landscape architecture from the University of Michigan. Active as an outdoor educator, landscape architect, and ecologist, Mary has worked extensively on federal lands and within the private sector as a trail crew leader and landscape designer, and has worked most recently for The Nature Conservancy, the National Park Service, and the Society for Ecological Restoration.



Wild Wild Weather

Friday, February 15, noon–1 p.m.

Fee: Free for members, free with admission for the general public

Dan Satterfield, a forecast meteorologist for more than 32 years, will speak about climate change and his work with Climate Central. He is a graduate of the University of Oklahoma with a degree in meteorology (atmospheric physics) and holds a master's degree in earth science. In January 2010, he was a guest of the National Science Foundation on a tour of science underway in Antarctica. On January 11, 2010, Dan became one of fewer than 5,000 people to have ever stood at the South Pole. Seven months later, he spent two weeks on top of the Greenland ice sheet, where scientists were recovering an ice core that will provide climate change information reaching back 130,000 years! Forecasting the weather is Dan's job, but sharing the wonders of all the earth sciences with students is his passion.

Geological Formations and Weather Patterns

Friday, March 15, 1–2 p.m.

Fee: \$15 members, \$20 general public

Environmental issues such as climate change and sea level rise are both at the forefront of public interest. Archaeology, as a discipline, is generally not viewed as a way to understand these topics, but according to **Darrin Lowery**, Ph.D., the best way to understand the impact of climate is to look at the past. By integrating both geology and archaeology, we can more thoroughly understand important environmental issues associated with the Chesapeake Bay region. Join Dr. Lowery to explore various aspects supporting a detailed understanding of Delmarva's ever-changing landscape.



Raised on Tilghman Island, Dr. Lowery comes from a long line of boat builders, farmers, and watermen. His interest in archaeology and geology began at the age of seven while combing the eroding shorelines of the Chesapeake Bay with his father. His interest is in how geological formations reveal weather patterns and how these weather patterns affect human development.



Registration is required for all programs.

Register online at adkinsarboretum.org, call 410-634-2847, extension 0, or e-mail info@adkinsarboretum.org. Please arrive at least 10 minutes prior to program start.

HOMEGROWN

A series with Elizabeth Beggins

Fridays, January 11, February 8, and March 8, 10 a.m.–noon

Fee: members: \$15 each program or \$35 for all three
general public: \$20 each program or \$45 for all three

Registration required. Limit: 20



Elizabeth Beggins is a writer and educator with over a decade of experience as a market gardener on the Eastern Shore. She believes that health depends on a keen understanding of what we eat and that our choices as consumers are vital to sustaining ourselves and our planet. She also is director of *The You Food Project*, a grassroots initiative designed to connect youth to food and the environment through school gardens. In this three-part series, she will teach participants the basics of producing food—from poultry to vegetables to gardening with kids.



Backyard Chickens

January 11

Admit it. You've considered getting a few backyard birds for months, but up to now, you've chickened out. Poultry keeping is both easier and more rewarding than you might imagine. Join Elizabeth for a program on the merits and methods of owning a small flock of chickens. With the proper preparations, you'll soon find yourself more attracted to keeping chickens than you ever dreamed possible.

Beginning Vegetable Gardening

February 8

Little is more satisfying than growing your own food. Except eating it! Best for novice gardeners, this class will teach the basics behind raising your own produce. Elizabeth will discuss what to plant, when to plant it, and where to get it; equipment needs; soil building techniques; and recipes for garden success. Make this the season for your vegetable garden dream to finally come alive.

Growing with Kids

March 8

Children are innately curious, and few opportunities hold as many exciting possibilities for discovery as spending time in a garden. Adults, whether family or friends, serve as a gateway by creating time and space for the young to explore the abundance of life that can come from the earth. In this final session of the "Homegrown" series, Elizabeth will provide ideas for kid-friendly gardening projects that are sure to inspire growers of every age.





ADULT PROGRAMS

SEASON'S BOUNTY

Fridays, April 5, June 7, and September 6, 10 a.m.–noon

Fee: members: \$15 each program or \$35 for all three

general public: \$20 each program or \$45 for all three

Registration required. Limit: 20

Spring Greens

April 5

As the cold of winter makes its reluctant exit and the palette of the landscape goes from dormant-brown to emergent-chartreuse, we often gravitate toward the fresh experience—being outside, renewing the garden, eating green foods. In this first program of a three-part series, **Elizabeth Beggins** will help you explore avenues for revitalizing yourself and your menu as she discusses growing and preparing such spring delicacies as zesty mustard, nutty arugula, and elegant pac-choy, in addition to favorites such as lettuce and spinach. Tasting samples and starter seed kits are sure to put some spring in your step.

Abundant Summer

June 7

Days lengthen, thermometers rise, and kitchens fill to overflowing with Mother Nature's gifts. Now is the time to maximize the bounty of summer. Plan on succession plantings at home, and benefit from the burgeoning variety at farmers' markets. In the second session of this tasty series, Elizabeth will guide you in prolonging your home harvests and savoring and storing those available from local farmers. Enjoy the flavors of the season as you learn.

Fall Harvest

September 6

Just because we can stop worrying about what to do with yet another summer squash doesn't mean the food season is over. Late summer is the time to plant a fall garden and the time you'll find the widest variety of produce all year. Elizabeth will show you how a little preparation now can yield big returns as the weather turns cooler. Greens, garlic, and gorgeous local offerings available at markets and roadside stands are the focus of this final program in the series. As always, savory treats and tools to use at home are an added bonus.



Composting

Saturday, March 9, 10–11:30 a.m.

Fee: \$15 members, \$20 general public

Join **Dr. Francis R. Gouin**, Professor Emeritus, University of Maryland and composting expert, to learn about the science in composting, how to start a compost pile and manage it from start to finish, and the benefits of using compost in gardening. *Enough Said*, a compilation of 125 essays that Dr. Gouin wrote for the Annapolis Horticulture Society newsletter over a twelve-year period, will be available for purchase at this program. This collection of articles on composting, pruning, soil testing, planting, eliminating pesky weeds (like bamboo and kudzu), and much, much more is a user-friendly reference that many gardeners consider an indispensable guide to "best practices" in the garden.

iNaturalist

Sunday, March 10, 1–2:30 p.m.

Free with admission

Ever taken an interesting photo of a plant or animal, and wanted to share what you've seen and where you've seen it? Liberate that photo from your hard drive, and share it with an online army of naturalists and scientists. **Matt Muir** will show how social media, photo sharing, and nature are linking local and global expertise for use in education and science. In an ever-growing world of nature-sharing websites, Matt will focus on iNaturalist.org, a free and open-source community that connects your observations to species range maps, state and county lists, and other external information sources. Learn how iNaturalist can be used to keep lists of all your species records, to establish projects where others can complement your efforts, to seek identification help, and to create field guides for your backyard, your favorite nature area, or any location that you choose.



Although not a prerequisite, it is recommended that you explore the iNaturalist.org website before the program. If you use a smartphone, you can also download the free iNaturalist app for Android or iPhone. During a walk at the Arboretum, Matt will demonstrate how to document nature observations and upload them to the Internet. Reservations requested.

Registration is required for all programs.

Register online at adkinsarboretum.org, call 410-634-2847, extension 0, or e-mail info@adkinsarboretum.org. Please arrive at least 10 minutes prior to program start.

Landscape Design Workshop

Saturday, March 16, 8:30 a.m.–4:30 p.m.

Fee: \$85 members, \$110 general public



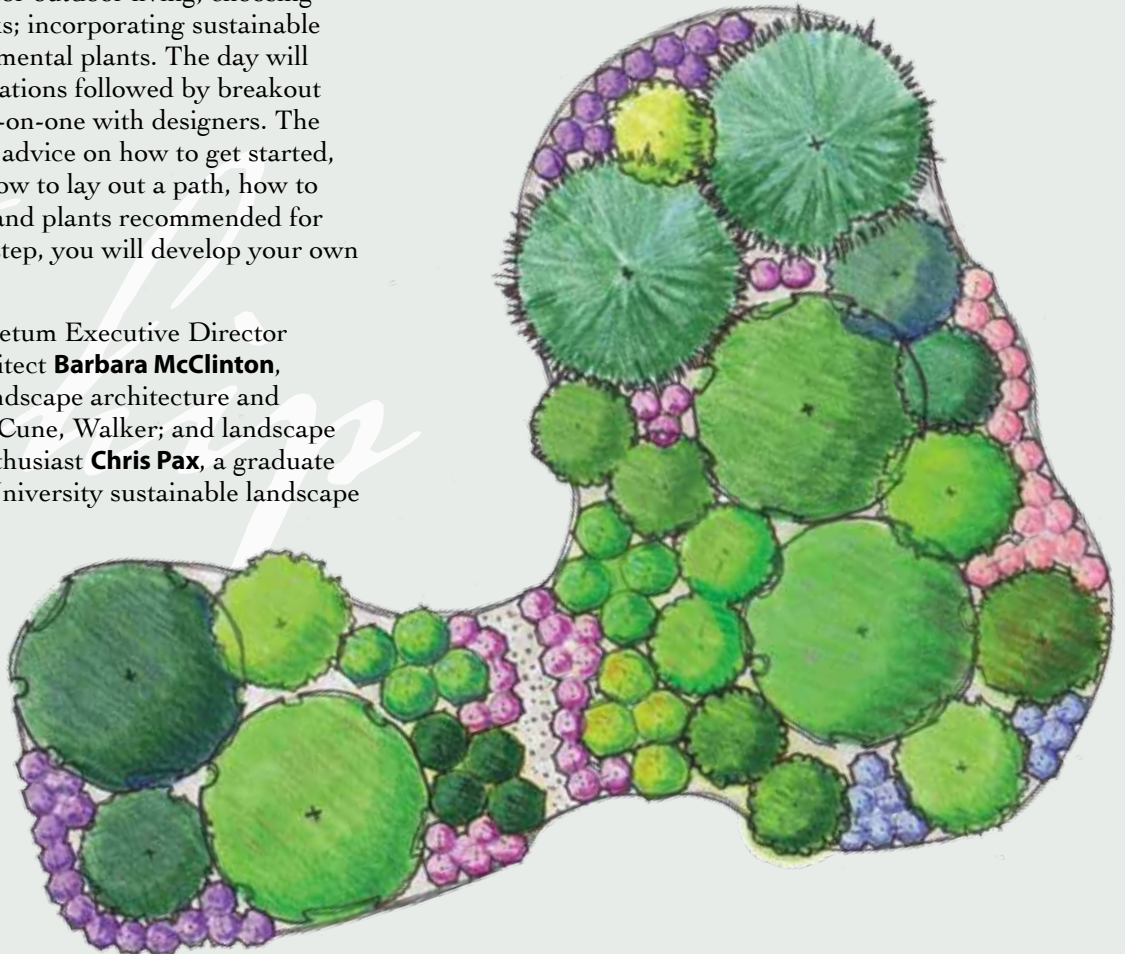
This workshop will address the typical challenges of homeowners in the Chesapeake Bay region. Three experienced landscape designers and avid gardeners will lead this all-day intensive design session. Come with your challenges and dreams, and leave with a landscape plan, ideas, and confidence to transform your home landscape for your enjoyment and pride.

Topics include analyzing the challenges and opportunities of

your property; developing a plan for circulation and unique features; designing “rooms” for outdoor living; choosing materials for patios and walks; incorporating sustainable practices; and selecting ornamental plants. The day will be organized around presentations followed by breakout sessions for you to work one-on-one with designers. The designers will offer practical advice on how to get started, what to do with wet areas, how to lay out a path, how to screen an undesirable view, and plants recommended for specific conditions. Step by step, you will develop your own landscape design.

Workshop leaders are Arboretum Executive Director **Ellie Altman**; landscape architect **Barbara McClinton**, formerly of the Baltimore landscape architecture and land planning firm Daft, McCune, Walker; and landscape designer and native plant enthusiast **Chris Pax**, a graduate of the George Washington University sustainable landscape design master’s program.

Bring lunch. A continental breakfast and break refreshments will be provided. Also bring a property plat, photos, and other documentation of your property. Worksheets and handouts on native plants will be provided. Registration required. Limit: 16



Designing for Waterfront Landscapes

Saturday, April 13, 10 a.m.–noon

Fee: \$35 members, \$45 general public

Waterfront properties present homeowners with a slew of both daunting challenges and precious opportunities. Join landscape designer and native plant enthusiast **Chris Pax**, a graduate of the George Washington University sustainable landscape design master’s program, for a look at plants that are good for waterfront landscape conditions and to review some of the special rules and regulations that may apply in your county. You may bring your plat diagram, some photos, and a bag lunch to enjoy with the group afterward — Chris will stay until 1 p.m. to answer questions about your specific property. When registering, please specify the county in which your property is located. This class is an excellent follow-up to the Landscape Design Workshop offered on March 16. Registration required. Limit: 16



Guided Walks

Explore the rich and unique native plant habitat of Adkins Arboretum. Led by **Arboretum docent naturalists**, First Saturday Guided Walks are offered on January 5, February 2, March 2, and April 6 at 10 a.m. The plant habitats you'll see include mature and young native forests, meadows, a wetland, as well as a rain garden and a pollinator garden. You may also visit the Arboretum's Native Plant Nursery and the children's teaching garden. Tours begin at the Visitor's Center and last approximately one hour.

On Saturday, April 13, join horticulturalist **Eric Wittman** for a Second Saturday Nursery Walk that explores the tremendous diversity of plant material at the Arboretum's Native Plant Nursery. Eric will select dozens of trees, shrubs, and perennials to aid visitors on their journey toward incorporating more native plants into their landscapes. Join Eric at the Nursery between 1 and 3 p.m. to learn more about all the plants your native Arboretum has to offer.

Walks are free with admission and are always free for members. Visit adkinsarboretum.org for more information.

To arrange a guided walk for more than 10 participants, contact Adult Program Coordinator **GINNA TIERNAN** at gtiernan@adkinsarboretum.org or 410-634-2847, ext. 27.

Nature as Muse

First Wednesdays, January 2, February 6, March 6, April 3
10 a.m.–1 p.m.

Free for members, free with admission for the general public

Each month this writing group will follow a different winding path through the Arboretum to quietly observe nature in detail. This will provide inspiration for expressing ideas that begin as seeds in our minds and then blossom into discovery as we write. No previous writing experience necessary. Enjoy how the paths in the Arboretum and the paths in your mind can lead you on an unpredictable but delightful journey. Bring a sack lunch and dress for both indoor and outdoor forest adventure.

Full Moon Walk

Wednesday, March 27, 6–8 p.m.

Fee: \$15 members, \$20 general public

Take a guided tour of the Arboretum under a full moon. We'll discover the night sights and sounds of the meadow and forest, the crunch of leaves underfoot, and spring in the woodland. Along the way, with guidance from Science Advisor **Mary Travaglini**, we might identify some buds by flashlight, check what the goats do under a full moon, and even see what smells the plants might give us. At the end of our walk, a little fire will be going, and we will have warm drinks and marshmallows to toast!



Saturdays, February 23, March 23, April 27

11 a.m.–1:30 p.m.

Fee: \$20 members, \$25 general public

Registration required. Limit: 25

Track the changing landscape from winter to spring. Following a guided walk with a docent naturalist, enjoy a delicious and nutritious lunch along with a brief lesson about the meal's nutritional value. Copies of recipes are provided.

February 23—Seeking Snow and Winter Warmth

Seek out green plants that cherish the warm winter sun, and possibly snow-covered plants, on this wintry walk. Plants of interest include mosses, crane fly orchid, magnolia and holly leaves, pine and red cedar needles, Christmas fern, and the green stems of strawberry bush and greenbrier.

Menu (gluten free)

Caldo verde with Kale

*Roasted winter vegetables with fresh herbs
quinoa, green bean, and tomato salad*

Almond cake with lemon frosting





Philadelphia Flower Show

Wednesday, March 6

Fee: \$75 members, \$95 general public includes transportation, tip, and admission

Register by Tuesday, February 26.

The British have a word for something that's inventive, dazzling, and extraordinary. That word is "brilliant!" In 2013, the PHS Philadelphia Flower Show will glow with the majestic beauty and creative genius of Great Britain and will pay tribute to centuries of inspiring and influential culture, culminating in the urbane design of 21st-century London. Your admission ticket provides access to the Show's finest features, including complimentary wine tastings, horticultural demonstrations, culinary presentations, and shopping in the Marketplace. The bus departs from Creamery Lane parking lot (near the fire station) in Easton at 8 a.m. and from Adkins Arboretum in Ridgely at 8:30 a.m. An additional stop at the 301/291 Park and Ride for Chestertown-area participants will be added upon request. The bus will depart for home at 6 p.m. theflowershow.com

Grounds for Sculpture

Wednesday, June 5

Fee: \$85 members, \$110 general public includes transportation, tip, and admission

Register by Tuesday, May 28.

Adkins Arboretum and Academy Art Museum will partner for this day trip to Grounds for Sculpture, a 35-acre arboretum and public sculpture park located in Hamilton, NJ. Grounds for Sculpture was founded in 1992 on the site of the former New Jersey State Fairgrounds by J. Seward Johnson to promote an understanding of and appreciation for contemporary sculpture for all people. Enjoy the outdoor permanent collection and indoor seasonal exhibitions. The park also offers shopping and dining, including the high-rated fine dining destination Rat's Restaurant. The bus departs from Creamery Lane parking lot in Easton at 8 a.m. and from Adkins Arboretum in Ridgely at 8:30 a.m. An additional stop at the 301/291 Park and Ride for Chestertown-area participants will be added upon request. The bus will depart from Grounds for Sculpture at 3 p.m. to return to the Arboretum at approximately 5:30 p.m. and Creamery Lane at 6 p.m. www.groundsforsculpture.org. Registration required. Limit: 22

For questions regarding trips or to request a Kent County Park and Ride pick-up location, contact Ginna Tiernan, Adult Program Coordinator, at gtiernan@adkinsarboretum.org or 410-634-2847, ext. 27.

March 23—Buds and Early Blooms

Many trees and shrubs are sporting new spring buds, fiddleheads are emerging on Christmas fern, and early pink and purple blooms are beginning to appear. Register for a one-hour or two-hour walk to check out skunk cabbage, spring beauty, and bloodroot blooms and the soft buds of paw paw, hickory, and tulip tree.

Menu

Beet and cabbage soup

Black-eyed pea salad

Dill rye bread with strawberry jam

Raspberry rhubarb cobbler

April 27—Fleeting Ephemerals

Appearing in early spring, ephemerals flower, fruit, and die back in a short period of time. Join a one-hour or two-hour walk to catch glimpses of pink spring beauty, Mayapple, and dogwood blossoms, yellow trout lily, golden groundsel, saffras and spicebush blooms, and white beech tree blossoms.

Menu

Chicken rice vegetable soup

Cabbage and carrot slaw with nuts

Ancient grain bread with buckwheat honey

Baked pineapple



Nature Preschool Programs

Tuesdays, February 5–March 12, 10–11:15 a.m.

Fee: \$50 members, \$65 general public for six sessions (\$10 sibling discount)

Classes are open to children ages 3 to 5. **Advance registration is required.** Enrollment is limited to 15 children, so early registration is recommended. Each class includes a healthy snack and a craft. For further information or to register, visit adkinsarboretum.org or call 410-634-2847, ext. 0.

Incredible Icicles

February 5

Brrr—it’s icicle time! Find out how icicles form, and look for icicles on a wintry walk. Children will create a sparkly icicle craft and munch on icicle treats while listening to winter stories.



Cardinal Valentine

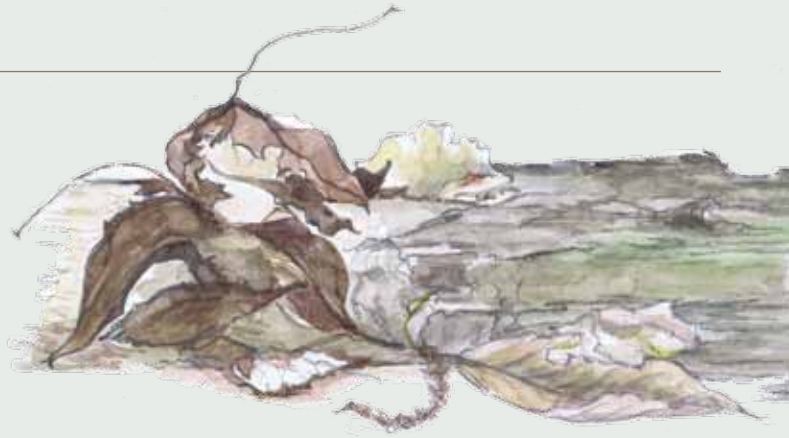
February 12

Bring on the red for this cozy cardinal class! After an entertaining (and educational) puppet show featuring Katie the Cardinal, children will look for cardinals on a meadow walk and make valentine treats for the birds.

Warm in the Cold

February 19

When the cold winds blow, where do the animals go? Learn about ways animals keep warm in wintry weather and search the forest for signs of winter critters, then return to the classroom for hot chocolate and animal stories.



Twigs and Bark

February 26

Bare winter branches provide the perfect opportunity to explore twigs and bark. Children will sort twigs by color and feel, make bark rubbings, and create twig art along the Arboretum’s woodland paths.

In Like a Lion

March 5

Welcome the month of March with a lesson on wind! Where does wind come from? How can we “see” the wind? Activities will include a wind experiment, kite flying in the meadow, and windy poems.

Wiggly Worms

March 12

Worms are a gardener’s best friend! Children will head to the Funshine Garden to dig up wiggly wildlife and prepare the beds for spring planting. A “Wiggle and Waggle” song, worm race, and garden craft will round out the morning.



pre



Science Wizardry for Home School Students

Thursdays, February 7–March 14, 1–2:30 p.m.

Fee: \$55 members, \$70 general public (\$10 sibling discount)

Program is designed for students in grades 2–5

Students will embrace the exciting world of science through fun, hands-on experiments. Scientific themes explored during this six-week session include sound and light waves, molecules, the color spectrum, buoyancy, and flight. A portion of each class will be spent outside, so students should come dressed for the weather.



Celebrate a birthday at Adkins Arboretum!

The Arboretum offers environmental youth birthday parties featuring outside games and exploration, engaging environmental activities, crafts, and time for cake and presents. For more information, contact Youth Program Coordinator Jenny Houghton at jhoughton@adkinsarboretum.org or 410-634-2847, ext. 21.

Winter Fun for Families

Sunday, January 20, 1–3 p.m.

Fee: \$8 per person or \$25 per family for members, \$10 per person or \$30 per family for the general public

Have a bad case of cabin fever? Bundle up the family for an afternoon of winter wonder at Adkins Arboretum. Activities will include a winter wildlife hike, an exciting critter experiment along the Blockston Branch, and a recycled bird feeder craft to take home. Warm clothes are a must, and hot chocolate will be provided.



school



Looking Ahead...

Spring Preschool Programs

Celebrate spring at the Arboretum with your preschooler! Discover the wonders of bluebirds, spring blooms, pollywogs, and more in a six-week program brimming with hands-on fun. Classes are open to children ages 3 to 5. Advance registration is required. Enrollment is limited to 15 children, so early registration is recommended. Each class includes a healthy snack and a craft. Programs will be offered Tuesdays, April 9–May 14. Program descriptions and registration information will be listed on the Arboretum website by March 1.

The Science of Spring for Homeschoolers

Each spring, the Arboretum’s wetland teems with new life. Home school students will welcome the spring season with hands-on exploration of plant and animal life cycles. Activities will include using microscopes to study organisms at the cellular level, dissecting flowering plants, investigating metamorphosis in a stream study, and more. Students should be prepared to make new friends, get a little dirty, and have fun with science! This program is designed for students in grades 2–5. This program will be offered Thursdays, April 11–May 16. Registration will be available on the Arboretum website by March 1.

Summer Nature Camps

For the past eight years, Adkins Arboretum’s Summer Nature Camps have given children the opportunity to enjoy their precious summer the old-fashioned way—outdoors! Campers will make new friends and lifelong memories while exploring the Arboretum’s woodland, meadow, stream, and wetland habitats. From grazing on blackberries to splashing in the Blockston Branch, the Arboretum’s Summer Nature Camps provide children with a truly enchanted experience.

Camp brochures and registration information will be available online by March 15. Space is limited, and advance registration is required. Sign up your young adventurer to grow with the Arboretum.

Camp Bumblebee (ages 2–3): June 10–14

Camp Pollywog (ages 4–6): June 17–21

Camp Paw Paw (ages 7–9): June 24–28

Camp Egret (ages 10–12): July 8–12

*There is a garden in every
childhood, an enchanted place
where colors are brighter, the air
softer, and the morning more
fragrant than ever again.*

ELIZABETH LAWRENCE



JANUARY 2013

SUNDAY	MONDAY	TUESDAY	WEDNESDAY	THURSDAY	FRIDAY	SATURDAY
		1	2 Nature as Muse 10 a.m.-1 p.m.	3	4	5 First Saturday Guided Walk 10 a.m.
6	7	8	9	10	11 Backyard Chickens 10 a.m.-noon	12
13	14	15	16	17	18	19
20 Winter Fun for Families 1-3 p.m.	21 Beginning Drawing 10 a.m.-12:30 p.m.	22	23	24	25	26
27	28 Beginning Drawing 10 a.m.-12:30 p.m.	29	30	31		

FEBRUARY 2013

SUNDAY	MONDAY	TUESDAY	WEDNESDAY	THURSDAY	FRIDAY	SATURDAY
					1	2 First Saturday Guided Walk 10 a.m.
3	4 Beginning Drawing 10 a.m.-12:30 p.m.	5 Incredible Icicles preschool program 10-11:15 a.m. Wild Wild Weather noon-1 p.m.	6 Nature as Muse 10 a.m.-1 p.m.	7 Science Wizardry for Home School Students 1-2:30 p.m.	8 Beginning Vegetable Gardening 10 a.m.-noon	9
10	11 Beginning Drawing 10 a.m.-12:30 p.m.	12 Cardinal Valentine preschool program 10-11:15 a.m.	13	14 Science Wizardry for Home School Students 1-2:30 p.m.	15 Wild Wild Weather noon-1 p.m.	16 Art Reception 3-5 p.m.
17	18 Beginning Drawing 10 a.m.-12:30 p.m.	19 Warm in the Cold preschool program 10-11:15 a.m.	20	21 Science Wizardry for Home School Students 1-2:30 p.m.	22	23 Soup 'n Walk 11 a.m.-1:30 p.m.
24 Winter Tree ID 1-2:30 p.m.	25	26 Twigs and Bark preschool program 10-11:15 a.m.	27	28 Science Wizardry for Home School Students 1-2:30 p.m.		

MARCH 2013

SUNDAY	MONDAY	TUESDAY	WEDNESDAY	THURSDAY	FRIDAY	SATURDAY
					1	2 First Saturday Guided Walk 10 a.m. Peatlands and Bog-like Habitats 1-2:30 p.m.
3	4	5 In Like a Lion preschool program 10-11:15 a.m.	6 Nature as Muse 10 a.m.-1 p.m. Philadelphia Flower Show bus trip	7 Science Wizardry for Home School Students 1-2:30 p.m.	8 Growing with Kids 10 a.m.-noon	9 Composting 10-11:30 a.m.
10 iNaturalist 1-2:30 p.m.	11	12 Wiggly Worms preschool program 10-11:15 a.m.	13	14 Science Wizardry for Home School Students 1-2:30 p.m.	15 Geological Formations and Weather Patterns 1-2 p.m.	16 Herpetology Walk 10-11:30 a.m. Landscape Design Workshop 8:30 a.m.-4:30 p.m.
17	18	19	20 Introduction to Nature Journaling 10 a.m.-2:30 p.m.	21	22 Sticks and Stones 1-2 p.m.	23 Soup 'n Walk 11 a.m.-1:30 p.m.
24/31	25	26	27 Full Moon Walk 6-8 p.m.	28	29	30

APRIL 2013

SUNDAY	MONDAY	TUESDAY	WEDNESDAY	THURSDAY	FRIDAY	SATURDAY
	1	2	3 Nature as Muse 10 a.m.-1 p.m.	4	5 Spring Greens 10 a.m.-noon	6 Arbor Day Run 9 a.m. First Saturday Guided Walk 10 a.m.
7	8	9 Preschool program 10-11:15 a.m.	10	11 Science Wizardry for Home School Students 1-2:30 p.m.	12 Spring Native Plant Sale Members' Sale Day 10 a.m.-4 p.m.	13 Spring Native Plant Sale 10 a.m.-4 p.m. Waterfront Landscapes 10 a.m.-noon Second Sat. Nursery Walk 1-3 p.m.
14 Spring Native Plant Sale 10 a.m.-4 p.m.	15	16 Preschool program 10-11:15 a.m.	17	18 Science Wizardry for Home School Students 1-2:30 p.m.	19	20 Close-up Photography 8 a.m.-noon Art Reception 3-5 p.m.
21 Spring Ephemerals 1-2:30 p.m.	22	23 Preschool program 10-11:15 a.m.	24 Nature Journaling with Spring Ephemerals 10 a.m.-3:30 p.m.	25 Science Wizardry for Home School Students 1-2:30 p.m.	26	27 Soup 'n Walk 11 a.m.-1:30 p.m.
28	29	30 Preschool program 10-11:15 a.m.				